

Features

PROGET multipurpose doors

THE MULTIPURPOSE DOOR IN A CLASS OF ITS OWN

„Indisputable quality“

- Especially sturdy door for safe functioning over time
- Built to order for all kinds of requests
- Fully galvanized door, including the “hidden” parts
- Made of “Sendzimir” processed hot-galvanized sheet metal
- Corrosion protection also provided along cut edges of the metal sheets
- Painted with epoxy-polyester thermoset powders in a 180 degrees (Celsius) oven
- Substantial paint layer (70 microns plus)
- Optimal corrosion resistance demonstrated by 500 hour salt-fog test
- Unaffected by severe climate changes, demonstrated by 2000 hours with +60° to -10° cycles at 75% humidity
- Finishing with high-quality aesthetics
- Orange skin anti-scratch structured paint
- Customizable with wide selection of RAL colors

CE marking for external use

- Wind resistance and water tightness
- Acoustic and thermal isolation
- Air permeability
- Suitable for use with panic bar

“Practicality of use”

- Truly sturdy frame that facilitates anchoring to the wall
- Suitable for all types of walls
- Ample size range
- Wide variety of accessories
- Easy installation

“Versatility”

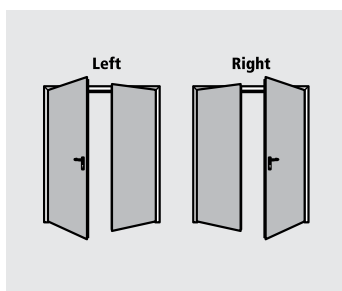
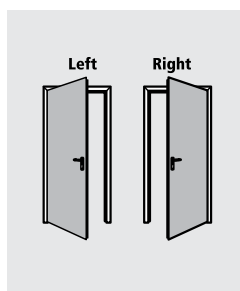
- Very wide field of application
- Can be combined with various frame types
- Installation onto any wall type
- Installation with a block frame possible

“Manufacturing technology”

- Manufacturing in modern and functional facilities which employ the latest technologies to maintain high quality levels and product uniformity
- The entire production process - from raw materials to painted and packaged products - takes place inside Ninz’s own facilities, ensuring a 360 degree door control

Opening direction

Opening direction needs to be indicated while ordering



One-leaved doors



Two-leaved doors

Features

PROGET multipurpose doors

STANDARD ELEMENTS

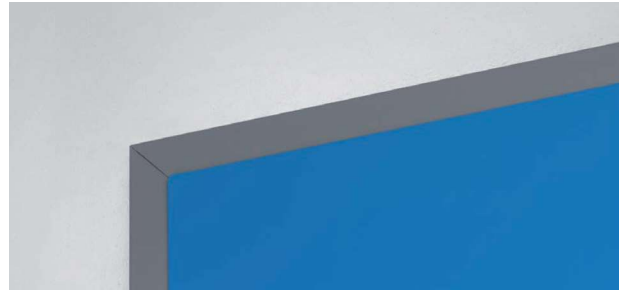
which comprise Proget fire doors:

Door leaf

- Made of "Sendzimir" processed hot-galvanized sheet metal, press folded and electro welded
- Perimetral rebate on 3 sides, flat at the bottom
- Internally reinforced with hot-galvanized steel profiles
- Heat-insulated treated mineral wool packing that is rigidly joined to the sheet metal
- Internal stiffeners for overhead door closer and panic bar
- Single thickness of 60 mm

Standard frame

- Sturdy profile with a sizeable cross section
- Made of "Sendzimir" processed hot-galvanized sheet metal
- Equipped with special assembly brackets
- Grooves for rebate sealing
- Standard installation via anchors for mortar fixing
- Upon request installation via expansion or installation screws (delivered without wall anchors)
- Lower spacer, mounting template
- Rests on finished flooring without rebate
- Strike plates in black plastic for lock bolt and safety bolts
- Assembly required for doorframes



Hinges

- Nr. 2 three-wing hinges for each leaf
- of which one ball-bearing hinge with screws for vertical adjustment of the leaf, **CE** marked as per EN 1935, classified for up to 160 kg load, 200.000 cycles durability, suitable for fire door use
- and one hinge with self-closing spring

Safety bolts

- Nr. 1 sturdy safety bolt applied on hinge side leaf edge

Locking mechanism

- Reversible locking mechanism with bolt and central latch
- Insert with patent key, Euro profile cylinder ready

Handle

- Handle in black plastic with steel core
- Steel installation plate with cylinder hole
- Cover plate in black plastic
- Fastener screws and patent key insert

Features

PROGET multipurpose doors

INCLUDED ACCESSORIES

which comprise Proget multipurpose doors:

Locking mechanism on inactive leaf

- "Flush-bolt" automatic latching of the inactive leaf
- Lever control for unlocking

Upper coupling system for the inactive leaf

- Inactive leaf lock activated device which inserts rod into the upper strike box
- Upper strike box in pierced steel with steel roller

Lower coupling system for the inactive leaf

- Vertical rod with steel point which inserts into lower strike box
- Lower floor catch (floor-mounted bushing) made of black plastic with rebate stopper

Identification plate

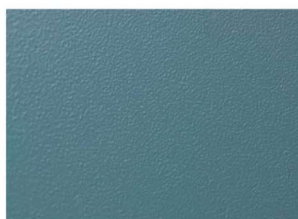
- Metal tag with door identification data



Standard paint - group 01:

leaf color NCS 4020-B50G

frame color NCS 5020-B50G



Finishing

- Standard paint with epoxy-polyester thermoset powders in a 180 degrees oven, orange skin, anti-scratch finishing
- Standard pastel turquoise color, lighter tone for the leaf (NCS4020-B50G), darker tone for the frame (NCS5020-B50G)

Standard packaging

- Single leaf wrapped into stretchable polyethylene (PE) film
- Single packaging for each doorframe with stretchable polyethylene (PE) film
- Palletized on wooden pallets

Door weight

kg/m² of wall opening

1 leaf	29
2 leaves	26

NOTE

If the door ever needs to be repainted, follow the precise instructions on the "Painting" page.

Features

PROGET multipurpose doors

OPTIONAL ACCESSORIES

A wide variety of accessories and surface finishes are available on request for maximum value enhancement of Proget doors to your own specific needs.

The proper accessories can help resolve:

Safety-related needs

- Doors for panic exits (see panic bars)
- Doors for emergency exits (see emergency exit handles)
- Three-point locking mechanism

Installation and utilization needs

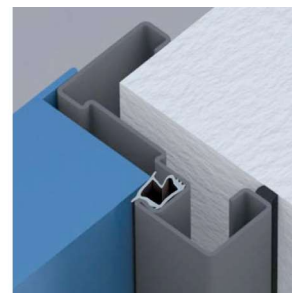
- Special frames
- Frame extensions
- Different kinds of floor mounted catches
- Roofing and drip steel-profile
- Special installation screws
- Kick and protection plates in stainless steel
- Rectangular windows, standard or built to order
- Round windows
- Wide variety of louvers
- One-leaved door with frame on four sides

Access-related control issues

- Electrically-activated lock mechanisms
- Electric handle mechanisms
- Magnetic blocking mechanisms

Performance enhancing

- Sealing
- Cylinders
- Door closers
- Special handles



Customized finishing

- Select finishing from a wide variety of RAL colours
- NDD – Ninz Digital Decor, graphic images applied with special ink jets and protected by a transparent topcoat. Infinite varieties of customizable decorations in harmony with specific door settings
- Stainless steel handles
- Colored handles

Packaging for maximum protection

Sturdy wooden crates protect all doors and related accessories

- For NDD decorated doors
- On construction sites
- During shipping abroad
- For special transport

NOTE

Details about optional accessories may be found in the present brochure in chapters:

- Painting and NDD decorations
- Accessories for metal doors
- Emergency handles and panic bars

Specific optional accessories - Windows

PROGET multipurpose doors

MULTIPURPOSE WINDOW WITH METAL WINDOW FRAME

Upon request one- and two-leaved doors may be equipped with round or rectangular windows, with different types of glass and respective window frames fixed with screws. The window frame carters are included for round window and available as an optional accessory for the rectangular one.

Production limits

Window sizes are standard and the minimum border strips around the window may not be reduced.

Borders, window position

"Border measurement" refers to the distance from the edge of the window to the wall opening of the door.

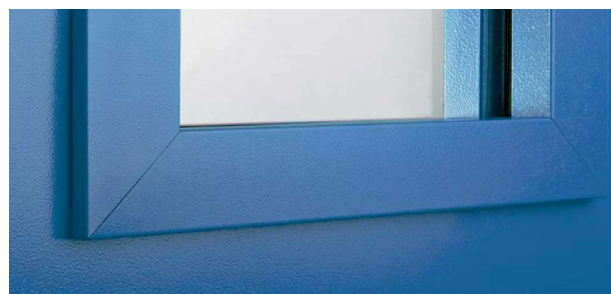
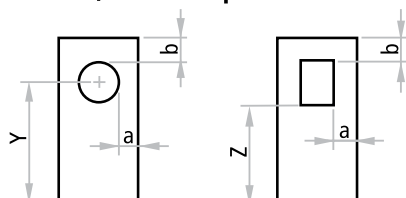
Elevation for round windows

window dimensions	FM H	position
Ø 300	minimum 1950	Y=1600
Ø 300	less than 1950	Y=FM H - 350
Ø 400	minimum 2150	Y=1600
Ø 400	from 1950 to 2149	Y=1550
Ø 400	less than 1950	Y=FM H - 400

Elevation for rectangular windows

window dimensions L x H	FM H	position
250/300/400 x 400	minimum 2150	Z=1450
250/300/400 x 400	from 1950 to 2149	Z=1350
250/300/400 x 400	less than 950	Z=FM H - 600
400 x 600	minimum 2150	Z=1250
400 x 600	from 1950 to 2149	Z=1150
400 x 600	less than 1950	Z=FM H - 800
400 x 1200	minimum 2150	Z=650
400 x 1200	from 1950 to 2149	Z=550
400 x 1200	less than 1950	Z=FM H - 1400
400 x 600 KIPP	minimum 2150	Z=1250
400 x 600 KIPP	from 2050 to 2149	Z=1150
400 x 600 KIPP	less than 2050	Z=FM H - 800
min. 250 x 250		Z=as indicated by costumer

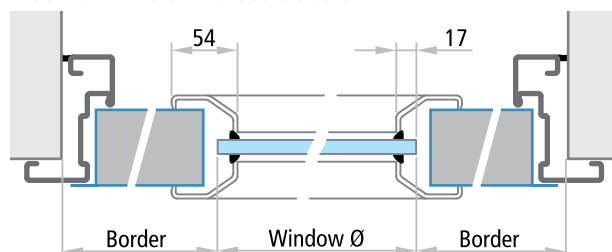
Borders, window position



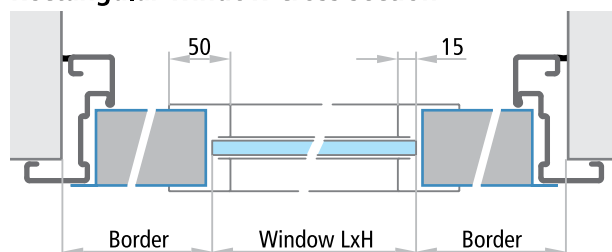
NOTE

For the rectangular windows the frame carters are an optional accessory

Round window cross section

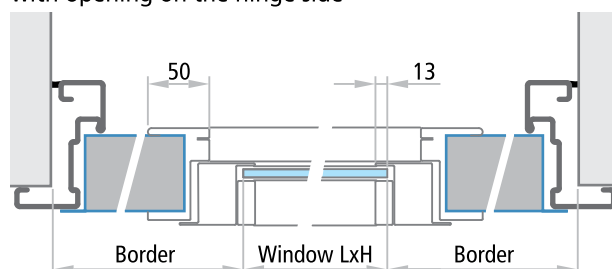


Rectangular window cross section



KIPP window cross section


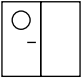
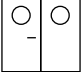
with opening on the hinge side



Specific optional accessories - Windows

PROGET multipurpose doors

Window dimensions

		min. border		dimensions FM L min.	
		a	b	L1	L2
	Ø 300	200	200	700	
	Ø 400			800	
	Ø 300	200	200	L1 700 + L2 350	
	Ø 400			L1 800 + L2 350	
	Ø 300	200	200	L1 700 + L2 700	
	Ø 400			L1 800 + L2 800	

Glasses available

shapes


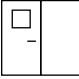
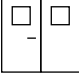

laminated, 2B2 rated	3 + 3 mm	rectangular, circular
laminated, 2B2 rated	4 + 4 mm	rectangular
low emission double glass window with 2 laminated glazings 2B2 rated	3+3 / 12 / 3+3 mm	rectangular
laminated, 2B2 rated	3 + 3 mm	Kipp rectangular

NOTE

Position and measurements indicated above are those standard.

Different positions may be considered as long as they respect the minimum "a" and "b" border strips. The window itself may not be supplied separately except for replacements. It is always advisable for doors with windows to be equipped with door closers for controlled closing.

Window dimensions

		min. border		dimensions FM L min.	
		a	b	L1	L2
	250 x 400	200	200	650	
	300 x 400	200	200	700	
	400 x 400	200	200	800	
	400 x 600	200	200	800	
	400 x 1200	200	200	800	
	Windows made to order min,250x250	200	200	650	
	400 x 600 KIPP	300	300	1000	
	250 x 400	200	200	L1 650 + L2 350	
	300 x 400	200	200	L1 700 + L2 350	
	400 x 400	200	200	L1 800 + L2 350	
	400 x 600	200	200	L1 800 + L2 350	
	400 x 1200	200	200	L1 800 + L2 350	
	Windows made to order min,250x250	200	200	L1 650 + L2 350	
	400 x 600 KIPP	300	300	L1 1000 + L2 350	
	250 x 400	200	200	L1 650 + L2 650	
	300 x 400	200	200	L1 700 + L2 700	
	400 x 400	200	200	L1 800 + L2 800	
	400 x 600	200	200	L1 800 + L2 800	
	400 x 1200	200	200	L1 800 + L2 800	
	Windows made to order min,250x250	200	200	L1 650 + L2 650	
	400 x 600 KIPP	300	300	L1 1000 + L2 1000	

Specific optional accessories - Windows

PROGET multipurpose doors

MULTIPURPOSE WINDOW WITH RUBBER WINDOW FRAME

On request, one- and two-leaved doors may be equipped with round or rectangular windows, with laminated 3+3mm glass, 2B2 rated, framed with a black rubber EPDM profile.

The corners of rectangular windows are rounded (radius of approx. 100mm).

Production limits

Window sizes are standard and the minimum border strips around the window may not be reduced.

Borders, window position

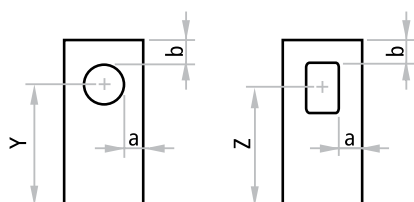
"Border measurement" refers to the distance from the edge of the window to the wall opening of the door.

Elevation for round windows

window dimensions	FM H	position
Ø 300	minimum 1950	Y=1600
Ø 300	less than 1950	Y=FM H - 350
Ø 400	minimum 2000	Y=1600
Ø 400	less than 2000	Y=FM H - 400

Elevation of rectangular windows

window dimensions L x H	FM H	position
300 x 500	minimum 1950	Z=1500
300 x 500	less than 1950	Z=FM H - 450
400 x 700	minimum 2050	Z=1500
400 x 700	less than 2050	Z=FM H - 550

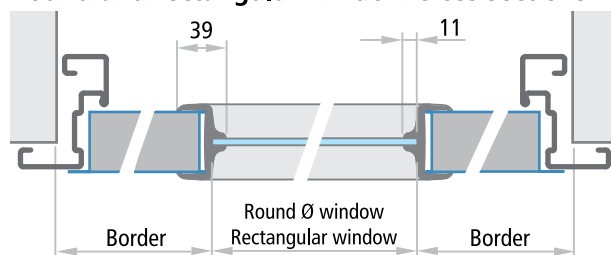


NOTE

The positions indicated above are those standard. Different positions may be considered as long as they respect the minimum "a" and "b" border strips. The window itself may not be supplied separately except for replacements. It is always advisable for doors with windows to be equipped with door closers for controlled closing.



Round and rectangular window cross sections



Window dimensions

		minimum border		FM L min. dimensions
		a	b	
	Ø 300	200	200	700
	Ø 400	200	200	800
	Ø 300	200	200	L1 700 + L2 350
	Ø 400	200	200	L1 800 + L2 350
	Ø 300	200	200	L1 700 + L2 700
	Ø 400	200	200	L1 800 + L2 800
	300 x 500	200	200	700
	400 x 700	200	200	800
	300 x 500	200	200	L1 700 + L2 350
	400 x 700	200	200	L1 800 + L2 350
	300 x 500	200	200	L1 700 + L2 700
	400 x 700	200	200	L1 800 + L2 800

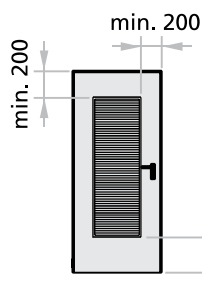
Specific optional accessories

PROGET multipurpose doors

VENTILATING LOUVERS WITH METAL FRAMES

To permit continuous air movement through the door, different types of ventilating louvers are available upon request in standard or non-standard formats. The screw-on metal frames for the ventilating louvers are painted the same color as the leaf using thermoset epoxy-polyester powders. On request air flow estimates calculated by a special program can be supplied for the dimensions of the ventilating louvers.

The vertical position of the louvers needs to be indicated on the order.

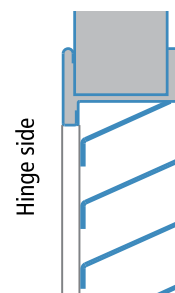
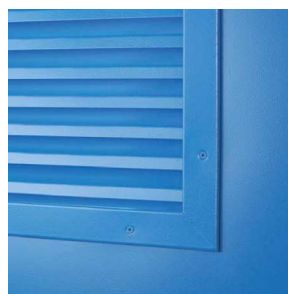


x = min. 200 mm for louver heights up to 1200 mm
x = min. 500 mm for louver heights over 1200 mm

Louver with steel grate plates

Louver with steel grate plates only. Standard production employs angled steel grate plates that slope downwards in the same direction as the door pull.

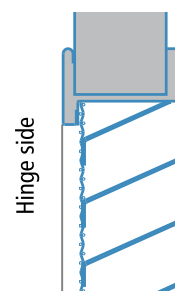
Dimensions L x H	estimated air flow
300 x 400	500 cm ²
400 x 600	1100 cm ²
400 x 1200	2500 cm ²
to order	on request



Louver with steel grate plates and anti-rodent mesh

Louver with steel grate plates overlaid with a metal anti-rodent mesh (13x13x1mm sheet). Standard production employs angled steel grate plates that slope downwards in the same direction as the door pull.

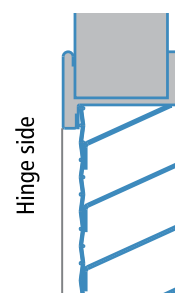
Dimensions L x H	estimated air flow
300 x 400	400 cm ²
400 x 600	900 cm ²
400 x 1200	2000 cm ²
to order	on request



Louver with steel grate plates and anti-insect mesh

Louver with steel grate plates overlaid with a metal anti-insect mesh (6,3x6,3x0,55mm sheet). Standard production employs angled steel grate plates that slope downwards in the same direction as the door pull.

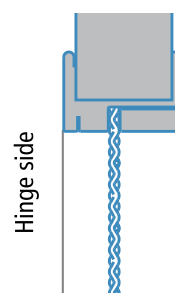
Dimensions L x H	estimated air flow
300 x 400	400 cm ²
400 x 600	800 cm ²
400 x 1200	2000 cm ²
to order	on request



Anti-rodent mesh

Metal frame with metal anti-rodent mesh only (16x16x3mm sheet).

Dimensions L x H	estimated air flow
300 x 400	700 cm ²
400 x 600	1500 cm ²
400 x 1200	3100 cm ²
to order	on request



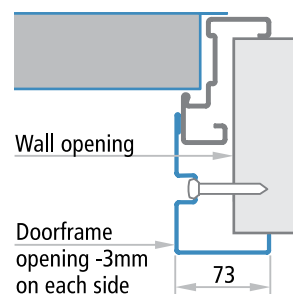
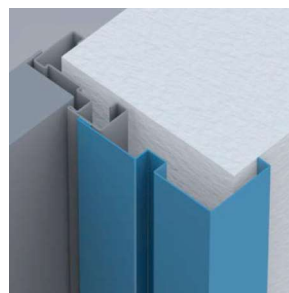
Specific optional accessories

PROGET multipurpose doors

FRAME EXTENSIONS FOR PROGET DOORS

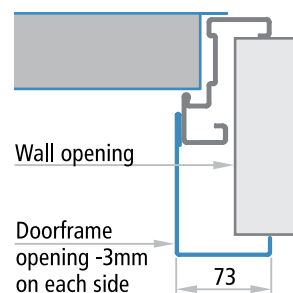
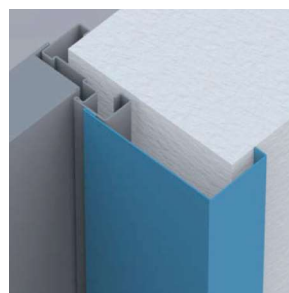
IM 1

Frame extension to be mounted in addition to the Proget acting as a wall cladding. Made of "Sendzimir" processed hot-galvanized sheet metal and painted the same color as the doorframe with epoxy-polyester powders. Profile on three sides, upper corners with 45 degree joint, fixing with screws and plugs in groove (screws and plugs not included).



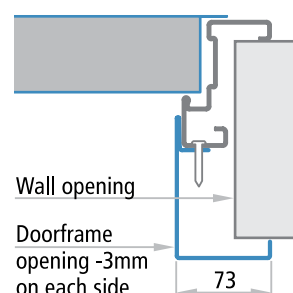
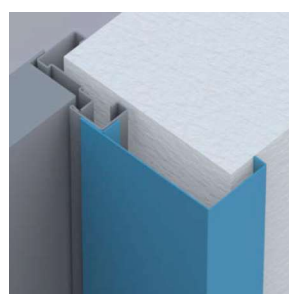
IM 3

Frame extension to be mounted in addition to the Proget acting as a wall cladding. Made of "Sendzimir" processed hot-galvanized sheet metal and painted the same color as the doorframe with epoxy-polyester powders. Profile on three sides, upper corners with 45 degree joint, fixing with screws and plugs (screws and plugs not included).



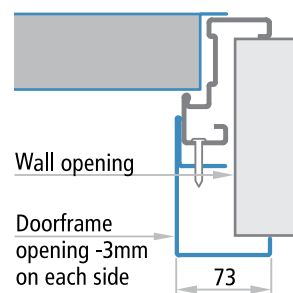
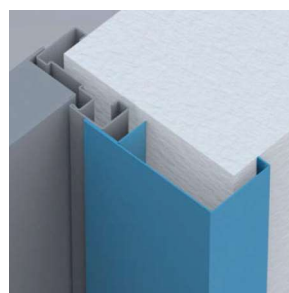
IM 4

Frame extension to be screwed to the Proget doorframe acting as a wall cladding. Made of "Sendzimir" processed hot-galvanized sheet metal painted the same color as the doorframe with epoxy-polyester powders. Profile on three sides, upper corners with 90 degree joint. Complete with fastener screws. To mount the frame extension, pre-drilled holes are available on the frame. Combine with sealing to conceal the screw heads.



IM 5

Telescopic frame extension to be screwed to the Proget doorframe acting as a wall cladding for expansion screw fixing. Consists of two overlapping profiles with a 25mm adjustable range. Made of "Sendzimir" processed hot-galvanized sheet metal painted the same color as the doorframe with epoxy-polyester powders. Profile on three sides, upper corners with 90 degree joint. Complete with fastener screws. To mount the frame extension, pre-drilled holes are available on the frame. Combine with sealing to conceal the screw heads.



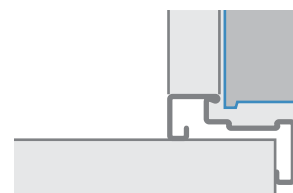
FRAME ON FOUR SIDES

Upon request one-leaved Proget doors may be supplied with frames on four sides and leaves with or without lower rebate. These type of doors are used mainly for technical rooms or shafts.

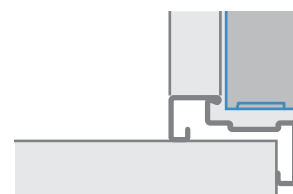
The frame on four sides is not available for the following applications: doors installed onto escape routes, two-leaved doors, external doors **CE** marked, application with embracing frame or block frame for in the reveal application, in combination with frame extensions.

ATTENTION

With the frame on four sides, the center of the handle will be 15 mm higher than the standard position. For more details, see the page "Door cross section - Measurements".



Leaf with lower rebate



Leaf without lower rebate

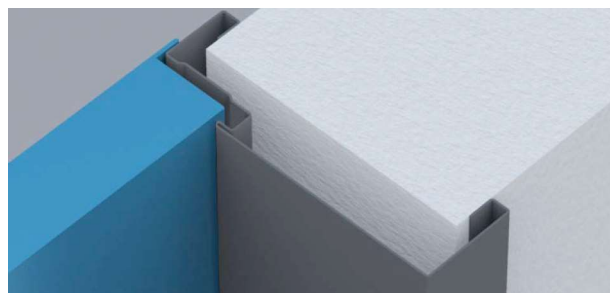
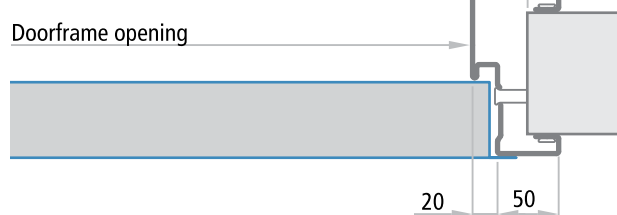
Specific optional accessories

PROGET multipurpose doors

SPECIAL FRAMES FOR PROGET MULTIPURPOSE DOORS

Embracing three sided frame for Proget multipurpose doors with 45 degree corner joints, made of 1,25mm thick "Sendzimir" processed galvanized steel sheets. To be screwed to finished walls, including joints for assembly, hole-covering caps, sealing and RAL painting with thermoset epoxy-polyester powder paints. Pre-drilled screw holes present on the doorframe. Installation screws not included.

Order measurements = FM

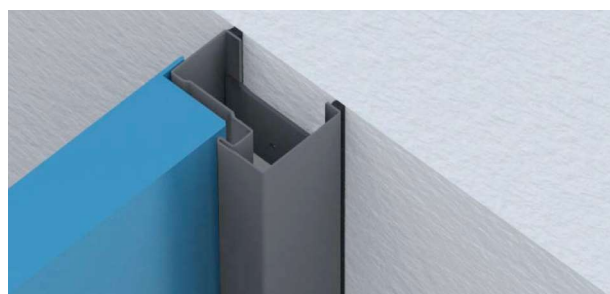


Minimum wall thickness for multipurpose doors = 70 mm

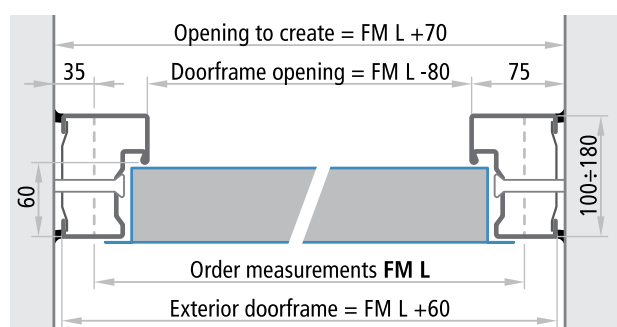
Order measurements	required wall opening	doorframe opening
FM L (width)	FM L	FM L - 80 mm
FM H (height)	FM H	FM H - 40 mm

BLOCK FRAME FOR IN THE REVEAL (TUNNEL) APPLICATIONS

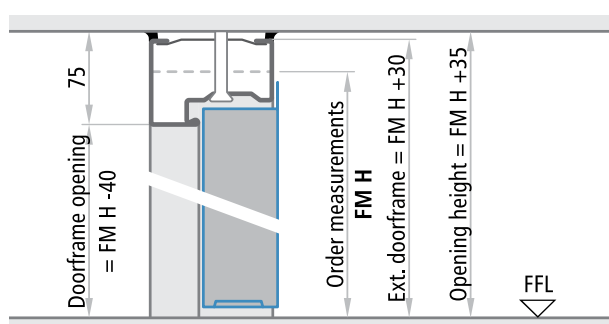
Three sided block frame application of Proget multipurpose doors with 45 degrees corner joints, made of 1,25mm thick "Sendzimir" processed galvanized steel sheets. To be screwed to finished walls and equipped with integrated attachment shackles. Includes assembly joints, hole-covering caps, sealing and RAL painting with thermoset epoxy-polyester powder paints. Pre-drilled screw holes present on the doorframe. Installation screws not included.



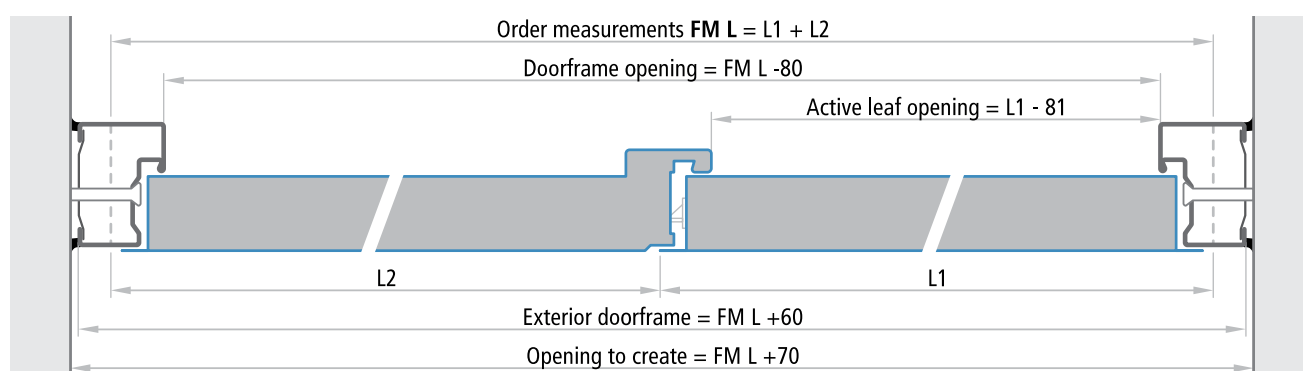
One-leaved doors - Horizontal cross section



Doors without lower threshold - Vertical cross section



Two-leaved doors - Horizontal cross section

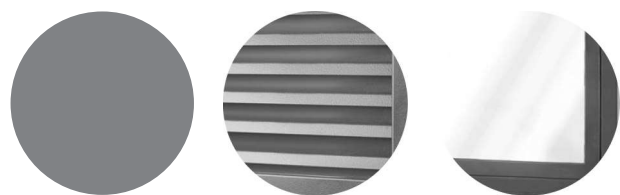
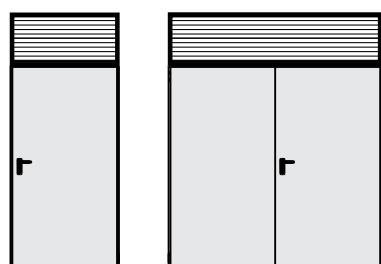


Specific optional accessories

PROGET multipurpose doors

PROGET OVERHEAD FRAME PANEL

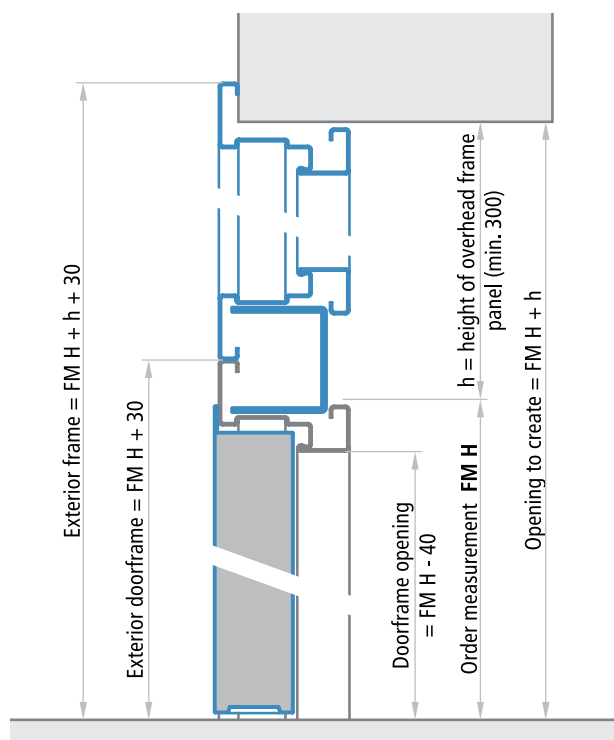
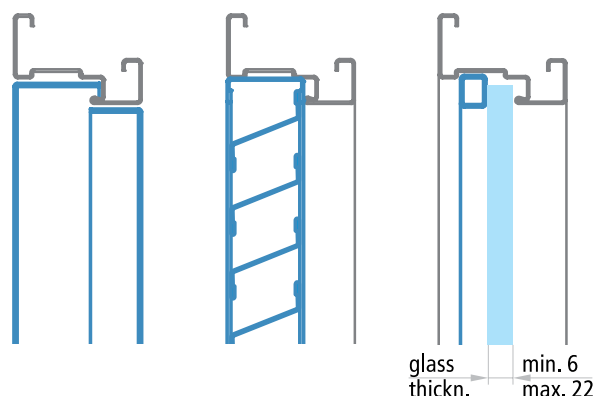
Available for the installation with Proget one- and two-leaved doors in following versions: blank filled with metal sheet from both sides (without insulation), with ventilation steel louver or with glazing bead (glass not supplied); all painted in the same color as doorframe with epoxy-polyester thermoset powders. Profiled on four sides with the standard angular- for in the reveal application- embracing-frame profiles, corners with 45 degree joint. In case of standard doorframe is supplied with an "C" shaped profile to be fixed upon the top frame of the door and shall be drilled on site for the fastening upon door and wall. In case of embracing or block frames, pre-drilled holes are available (screws and anchors not supplied).



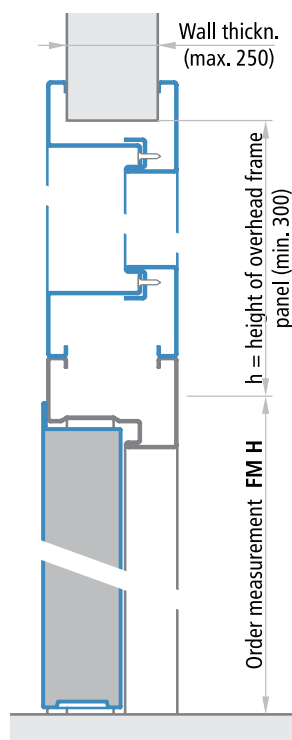
blank filled with metal sheet

with ventilation steel louver

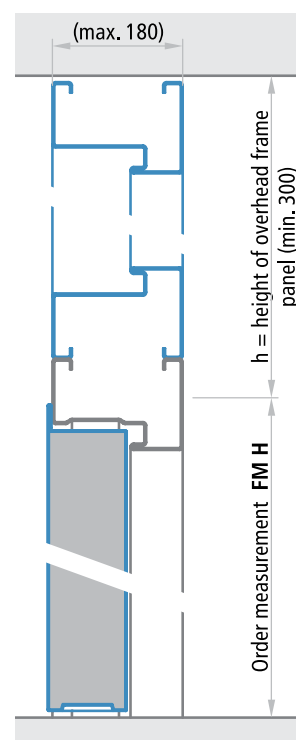
with glazing bead (glass not supplied)



vertical cross section of the door with overhead panel and standard angular doorframe)



with embracing doorframe



with block frame

NOTE

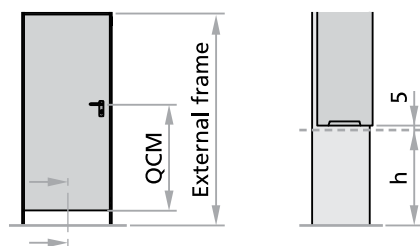
In case of overhead frame panel with glazing bead, the thickness of glass (not supplied) min. 6 mm and max. 22 mm must be specified.

Specific optional accessories

PROGET multipurpose doors

DOOR WITH EXTENDED FRAME

For one-leaved Proget doors only. Frame extends beyond the door leaf to create a gap below the door with height (h) varying of between 50 to 200 mm. Using the standard Proget door leaf and an extended the frame, the desired handle height (QCM) must be specified when ordered. In the absence of such indication, the QCM will be 1050mm.



Standard handle height	external frame	opening to create
1050	$FM H + h + 30$	$FM H + h$

NOTE

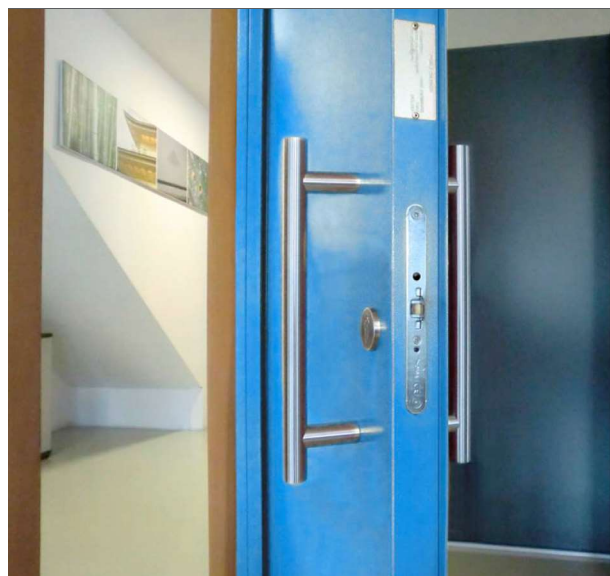
Not available for multipurpose doors Proget with $\text{C}\epsilon$ marking.

MORTICE LOCK WITH ROLLER LATCH AND G1X DOUBLE FIX GRAB DOOR HANDLE IN STAINLESS STEEL

For multipurpose one- or two-leaved Proget doors. Designed to permit free pedestrian passage, by simply pushing or pulling the door by the fix grab.

Usually the lock is not locked by key, thus the opening is possible by simple pulling or pushing, disengaging the roller latch. It is possible to regulate the engagement force of the roller latch, by turning the regulation screw visible on the cover plate of the lock. By locking the lock by key, the dead bolt blocks the opening of the door from both sides.

Included (factory mounted to the door): mortice lock with roller latch and central dead bolt activated by the cylinder; included (supplied on the side): item G1X which comprises a pair of brushed fix grab door handles in stainless steel (diameter 30mm, length 400mm, projection 90mm), a fixing kit for the handles to the door and a pair of escutcheons in brushed stainless steel with cylinder hole for euro profile cylinder (cylinder excluded, to be ordered separately).



Mortice lock with roller latch and G1X: pair of brushed fix grab door handles in stainless steel, installed on multipurpose Proget door

NOTE

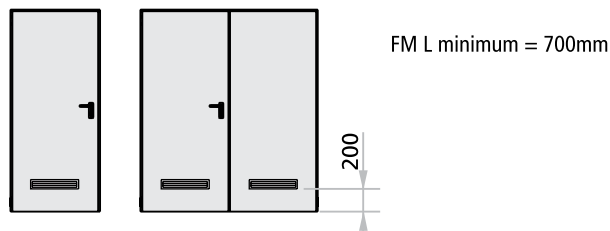
Not available for multipurpose doors Proget with $\text{C}\epsilon$ marking.

Specific optional accessories

PROGET multipurpose doors

VENTILATION LOUVER

Ventilation louver made of either black or white PVC, 482x99mm (air passage approx. 150cm²). The opening direction of the door needs to be specified.



Dimensions

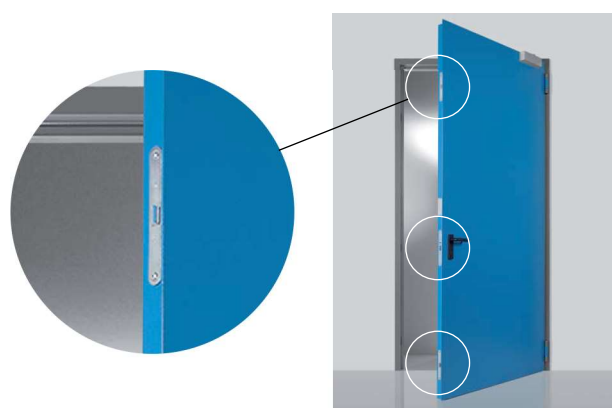
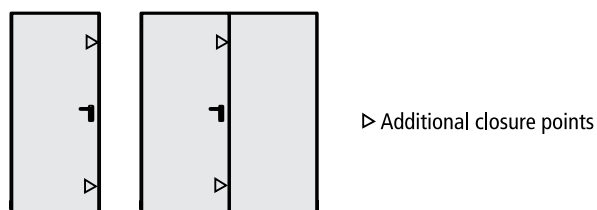
482 x 99

estimated air flow

150 cm²

THREE-POINT LOCKING MECHANISM

Upon request for a more reliable closure, one- and two-leaved Proget multipurpose doors may be delivered with a three-point lateral lock. In combination with double M1 handle and cylinder. The lock is also available for anti-panic and emergency push versions. Thus the three-point locking mechanism can be combined with emergency handles or with EXUS, TWIST, SLASH type BM panic bars in conformity with CE marking.

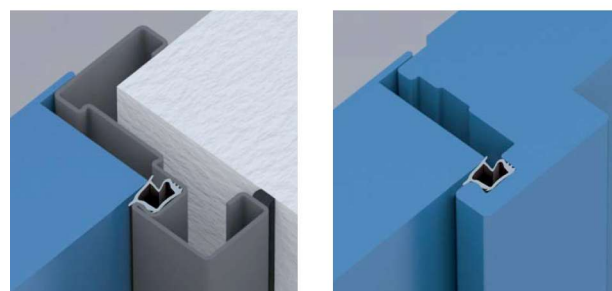


NOTE

Three point locking mechanism can be combined with M1, M1C, M1X, M11 and M11X handles only.

FF REBATE SEALING

FF sealing in black extruded profile to cut and to be pressed into the dedicated groove in the perimetral frame and on the central joint of two-leaved doors.

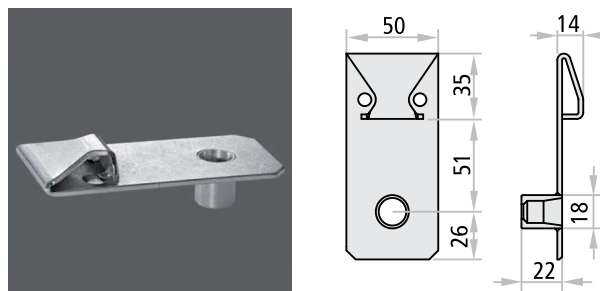


Specific optional accessories

PROGET multipurpose doors

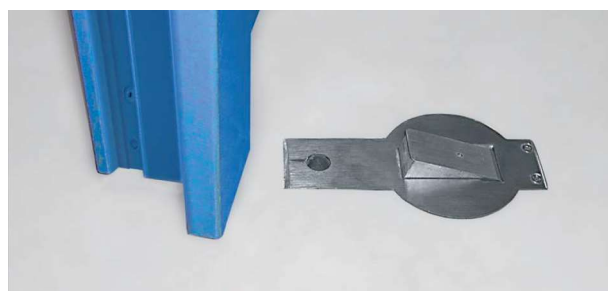
STEEL FLOOR CATCH

Floor-mounted steel floor catch for two-leaved Proget doors. Made of pierced and successively galvanized steel. Includes rebate stop for the inactive leaf, the strike box for insertion of the rod, Nr. 3 screws and Nr. 3 plugs. To be used in place of the plastic floor catch for doors that usually remain open and where carts and heavy equipment pass on a regular basis.



RETREATING FLOOR CATCH „N626“

To be applied in combination with two-leaved PROGET doors, which are usually to be kept open, in substitution of the standard floor catch. The N626's advantage is the embedding of the floor catch into the floor which is activated only by the closing of the inactive leaf. Thus when the doors are open protrusions are avoided guaranteeing nevertheless a correct closing.



NOTE

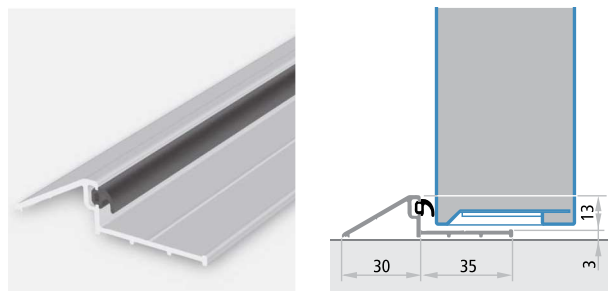
For the passing of the cable of the command function the installation into the floor of a wrinkled cable sleeve is necessary. The installation of the N626 requires trained personnel.

THRESHOLD

Fixed threshold in anodized aluminium supplied with relative rebate sealing. To be installed for single and double leaved doors onto the floor with screws and plugs (not supplied).

NOTE

This device is delivered only when the door has been ordered with **CE** conformity for external use. For the installation it is necessary to adapt the threshold to the frame of the door and to drill a hole for its fixing. Further it is necessary to finish up the threshold with silicone.



External doors **CE** marked

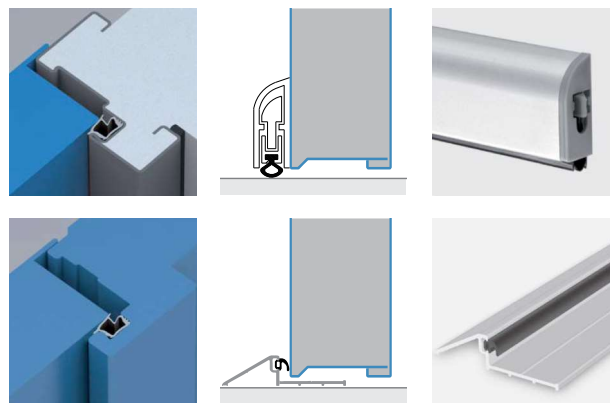
PROGET multipurpose doors - concerned norm EN 14351-1:2006+A1:2010

EXTERNAL PEDESTRIAN DOORS

The norm EN 14351-1 defines as an external door, that which separates the internal climate from the external one of a construction. For this use the doors need to be **CE** marked according to the norm EN 14351-1:2006+A1:2010 and if the door is installed within an emergency exit route, which means that a panic handle or bar is installed onto it, then the door also requires a conformity declaration of type 1 and further a **CE** Certificate emitted by a notified body, which for NINZ S.p.A is the declaration 0425-CPR-2237.

For doors Proget for external use order the relative Kits listed in the Proget multipurpose price list. Refer to the essential requirements listed in the table on the next page to select the correct version in conformity with the valid national standards.

In this way every door will be delivered with the **CE** marking and relative documentation conform to the valid standard.



ATTENTION

For the dimensional limits, minimum border measurements or production possibilities please refer to the specific pages of this brochure.

The values for the thermal transmittance W/m^2K shown in the table on the next page are given by the calculation according to the norm EN ISO 10077-1 done on samples of the dimensions 1,23x2,18 for areas $\leq 3,6m^2$ and on samples of the dimensions 2,00x2,18 for areas $> 3,6m^2$.

All performance values indicated in the table are valid only in presence of the following accessories or enhancements:

- standard angular- for in the reveal application- embracing-frame
- isolation of the door frame with the filling of polyurethane foam
- installation of rubber seals FF along the entire perimeter of the door frame including the central rebate for double leaved doors
- sealing of the perimeter of the frame (side to push) with neutral silicone
- presence of the automatic door sweep or the fixed lower threshold depending upon selected solution
- for doors with windows: dimensions of 300x400mm for "3+3 / 12 / 3+3" low emission double glass windows, composed of two 3+3 laminated glazings, 2B2 rated.

In case of windows up to a maximum size of 400x600mm the differing performance value for the thermal transmittance needs to be asked, all other performance values remain unchanged.

For the acoustic isolation performance values, in case of asymmetric double leaved doors ($L1 \neq L2$), select the minor R_w value of the two.

example 1: leaf without windows and $H=2150$, $L1=1000$, $L2= 500$ select 30 dB;

example 2: leaf without windows and $H=2150$, $L1=1200$, $L2=1000$ select 32 dB.

NOTE

For more details regarding the external installation, refer to the "Notices" section at the end of this brochure.

 	
Certificato di costanza delle prestazioni <i>Certificate of constancy of performance</i>	
Certificato N. Certificate No.	0425 - CPR - 2237
<small>In conformità al Regolamento 305/2011/UE del Parlamento Europeo e del Consiglio del 9 marzo 2011 (Regolamento Prodotti da Costruzione o CPR), questo certificato si applica al prodotto da costruzione In compliance with Regulation 305/2011/UE of the European Parliament and of the Council of 9 March 2011 (the Construction Products Certification or CPR), this certificate applies to the construction product</small>	
<small>ORGANISMO NOTIFICATO / NOTIFIED BODY</small> ICIM S.p.A. - Identification number: 0425 Piazza Don Enrico Mapelli, 75 - 20099 Sesto San Giovanni (MI) - ITALY	
<small>DATI FABBRICANTE / MANUFACTURER DETAILS</small> NINZ S.p.A.	
SEDE LEGALE HEAD OFFICE	Corso Trento, 2/A 38061 ALA (TN)
UNITÀ OPERATIVA PRODUCTION UNIT	Corso Trento, 2/A - 38061 ALA (TN) Via Negrelli, 17 - 39100 BOLZANO (BZ)
<small>DATI PRODOTTO / PRODUCT DETAILS</small> PORTE ESTERNE PER UTILIZZO SU VIE DI FUGA EXTERNAL PEDESTRIAN DOORSETS ON ESCAPE ROUTES <small>Caratteristiche: vedi Allegato / Characteristics: see Annex</small>	
<small>Questo certificato attesta che tutte le disposizioni riguardanti la valutazione e la verifica della costanza delle prestazioni e le prestazioni descritte nell'allegato ZA della norma EN 14351-1:2006+A1:2010 nell'ambito del sistema 1 sono applicabili e che i prodotti soddisfanno tutti i requisiti prescritti di cui sopra This certificate attests that all provisions concerning the assessment and verification of constancy of performance and the performances described in Annex ZA of the standard EN 14351-1:2006+A1:2010 under system 1 are applied and that the products fully all the prescribed requirements set out above.</small>	
<small>Questo certificato è stato emesso per la prima volta il 11/10/2010 e ha validità sino a che i metodi di prova o i requisiti del controllo della produzione in fabbrica stabiliti nella norma armonizzata, utilizzati per valutare la prestazione delle caratteristiche dichiarate, non cambiano, e il prodotto e le condizioni di produzione nello stabilimento non subiscano modifiche significative. This certificate was first issued on 11/10/2010 and will remain valid as long as the test methods and/or factory production control requirements included in the harmonized standard, used to assess the performance of the declared characteristics, do not change, and the product, and the manufacturing conditions in the plant are not modified significantly.</small>	
<small>Il presente Certificato è da ritenersi valido solo se accompagnato dal relativo Allegato / This Certificate is valid only with the relative Annex</small>	
 ICIM S.p.A. EMISSIONE 20/07/2015	
<small>ICIM S.p.A. è la società unica - Piazza Don Enrico Mapelli, 75 - 20099 Sesto San Giovanni (MI)</small>	

External doors C€ marked

PROGET multipurpose doors - concerned norm EN 14351-1:2006+A1:2010

Essential requirements for classifications according to certificate 0425-CPR-2237

	FM L x H dimensions	standard angular frame block frame for in the reveal applic. embracing frame			reached class with FF rebate sealing and automatic door sweep			reached class with FF rebate sealing and fix threshold			
					air permeability	thermal transmittance	acoustic performance	air permeability	thermal transmittance	water-tightness	resistance to windload
without window	≤ 3,6 m²	✓			class 2	1,31 W/m²K		class 2	1,30 W/m²K	class 1A	
	≤ 3,6 m²		✓		class 2	1,59 W/m²K		class 2	1,58 W/m²K	class 1A	
	≤ 3,6 m²			✓	class 2	1,49 W/m²K		class 2	1,48 W/m²K	class 1A	
	800 - 1100 x 2000 - 2250	✓	✓	✓			33 dB				
	1101 - 1340 x 2000 - 2250	✓	✓	✓			32 dB				
with window 300x400	800 - 1340 x 2251 - 2670	✓	✓	✓			32 dB				
	500 - 1150 x 1750 - 2150	✓	✓	✓							class C1
	≤ 3,6 m²	✓			class 2	1,78 W/m²K		class 2	1,77 W/m²K	class 1A	
	≤ 3,6 m²		✓		class 2	2,05 W/m²K		class 2	2,04 W/m²K	class 1A	
	≤ 3,6 m²			✓	class 2	1,96 W/m²K		class 2	1,95 W/m²K	class 1A	
without windows	800 - 1100 x 2000 - 2250	✓	✓	✓			32 dB				
	1101 - 1340 x 2000 - 2250	✓	✓	✓			31 dB				
	800 - 1340 x 2251 - 2670	✓	✓	✓			31 dB				
	700 - 1150 x 1750 - 2150	✓	✓	✓							class C1
	≤ 3,6 m²	✓			class 3	1,72 W/m²K		class 3	1,71 W/m²K	class 2A, 4B	
with windows 300x400	> 3,6 m²	✓			class 3	1,40 W/m²K		class 3	1,39 W/m²K	class 2A, 4B	
	≤ 3,6 m²		✓		class 3	2,00 W/m²K		class 3	1,99 W/m²K	class 2A, 4B	
	> 3,6 m²		✓		class 3	1,60 W/m²K		class 3	1,59 W/m²K	class 2A, 4B	
	≤ 3,6 m²			✓	class 3	1,91 W/m²K		class 3	1,90 W/m²K	class 2A, 4B	
	> 3,6 m²		✓		class 3	1,54 W/m²K		class 3	1,53 W/m²K	class 2A, 4B	
with windows 300x400	(L1 o L2) 500 - 799 x 2000 - 2670	✓	✓	✓			30 dB				
	(L1 o L2) 800 - 1100 x 2000 - 2250	✓	✓	✓			33 dB				
	(L1 o L2) 1101 - 1330 x 2000 - 2250	✓	✓	✓			32 dB				
	(L1 o L2) 800 - 1330 x 2251 - 2670	✓	✓	✓			32 dB				
	850 - 2300 x 1750 - 2150	✓	✓	✓							class C1
with windows 300x400	≤ 3,6 m²	✓			class 3	2,51 W/m²K		class 3	2,50 W/m²K	class 2A, 4B	
	> 3,6 m²	✓			class 3	1,90 W/m²K		class 3	1,89 W/m²K	class 2A, 4B	
	≤ 3,6 m²		✓		class 3	2,79 W/m²K		class 3	2,78 W/m²K	class 2A, 4B	
	> 3,6 m²		✓		class 3	2,09 W/m²K		class 3	2,08 W/m²K	class 2A, 4B	
	≤ 3,6 m²			✓	class 3	2,70 W/m²K		class 3	2,68 W/m²K	class 2A, 4B	
with windows 300x400	> 3,6 m²		✓		class 3	2,02 W/m²K		class 3	2,01 W/m²K	class 2A, 4B	
	(L1 o L2) 700 - 799 x 2000 - 2670	✓	✓	✓			29 dB				
	(L1 o L2) 800 - 1100 x 2000 - 2250	✓	✓	✓			32 dB				
	(L1 o L2) 1101 - 1330 x 2000 - 2250	✓	✓	✓			31 dB				
	(L1 o L2) 800 - 1330 x 2251 - 2670	✓	✓	✓			31 dB				
with windows 300x400	1050 * - 2300 x 1750 - 2150	✓	✓	✓							class C1

* = only for single leaf with window

other essential requirements

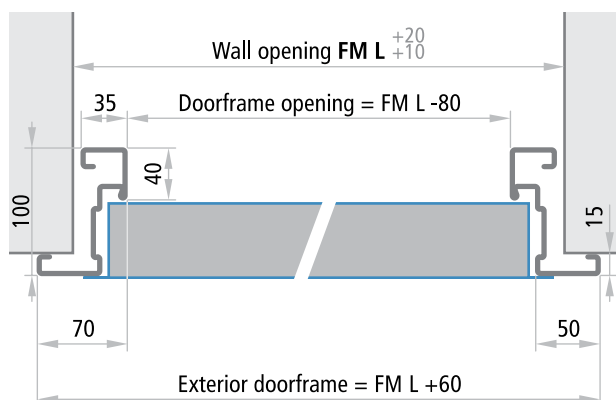
load-bearing capacity of safety devices	pass
ability to release	pass
dangerous substances	according to norm

Door cross sections - Measurements

PROGET multipurpose doors

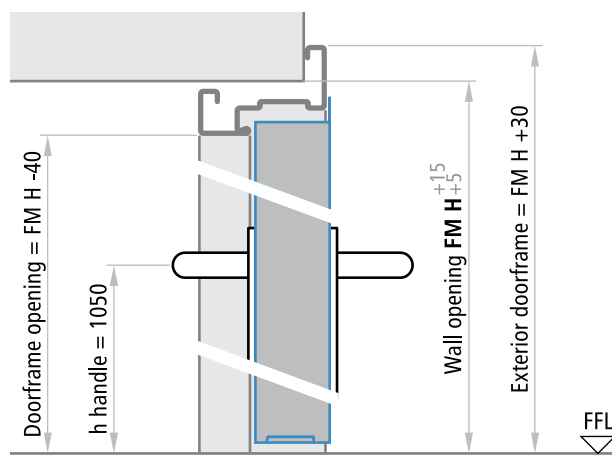
One-leaved doors

Horizontal cross section



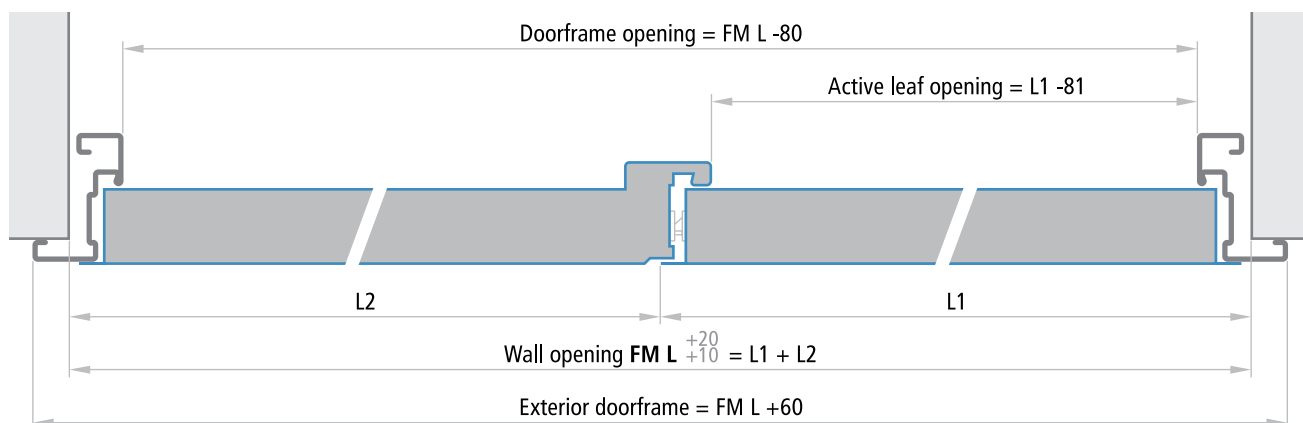
Doors without lower threshold

Vertical cross section



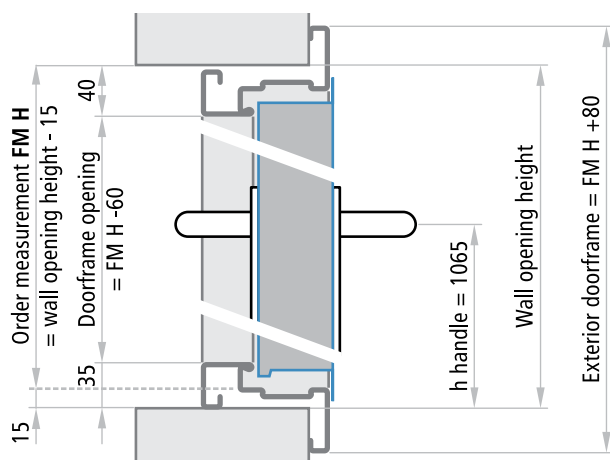
Two-leaved doors

Horizontal cross section



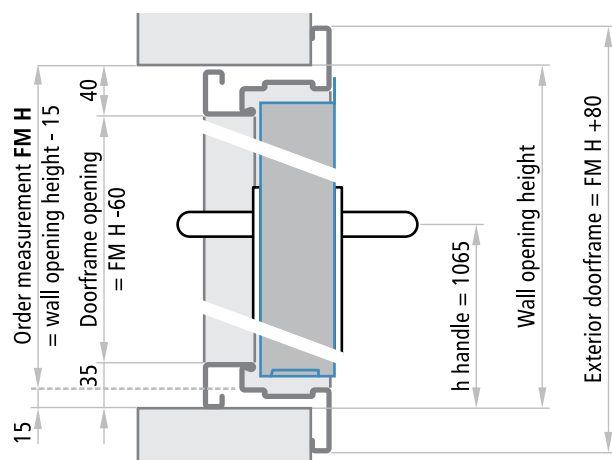
One-leaved doors with frame on 4 sides and leaf with lower rebate

Vertical cross section



One-leaved doors with frame on 4 sides and leaf without lower rebate

Vertical cross section



Leaf thickness

MULTIPURPOSE 60 mm

NOTE

The tolerances $FM L +20$, $FM H +15$ of the indicated measurements make it easier to fill the gap between the wall and the doorframe with cement mortar.

For dry wall installation, the holes must be precise and greater tolerance ranges should not be employed.