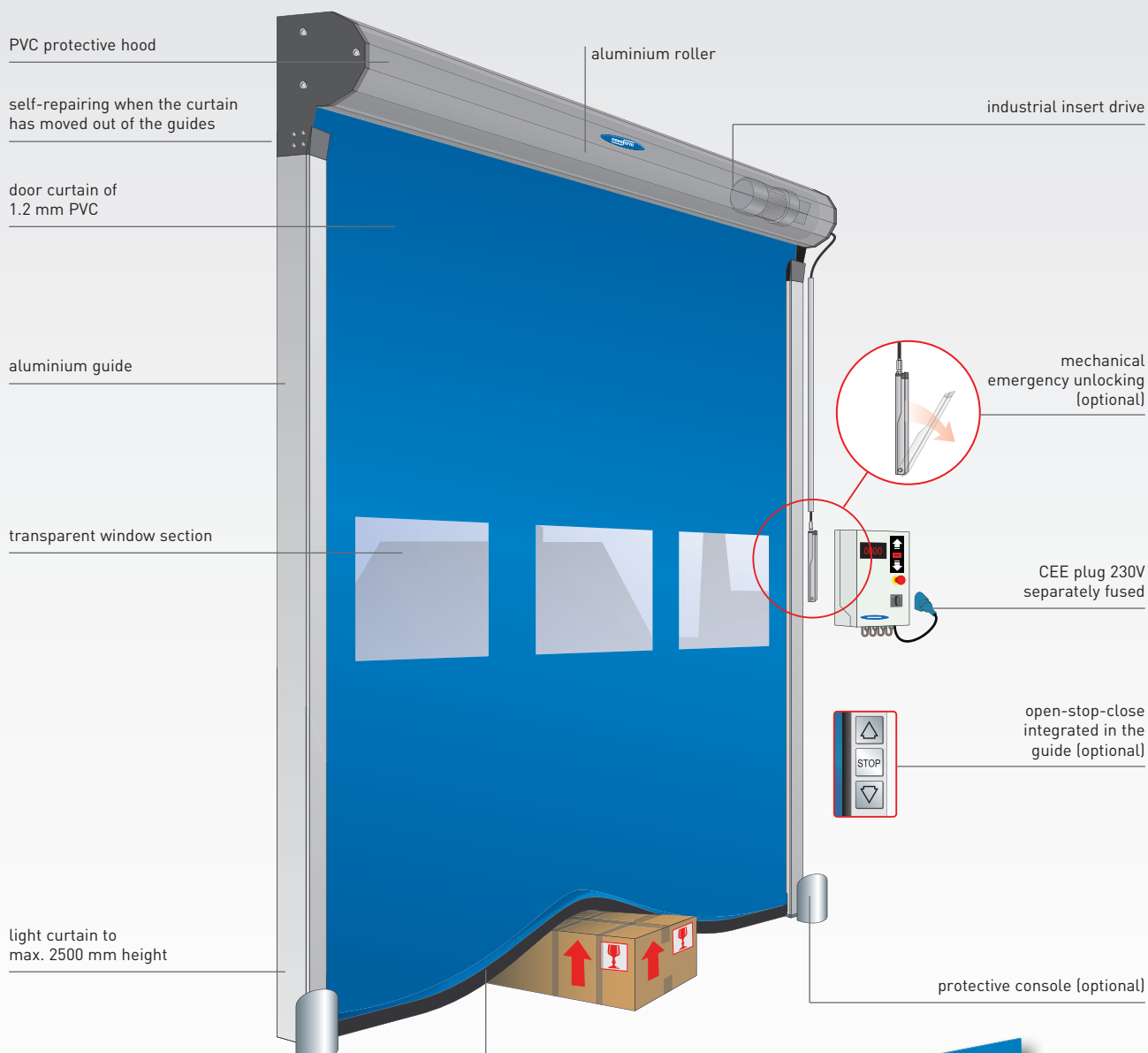


High Speed door Novo Speed Flex^{Flex Edge}

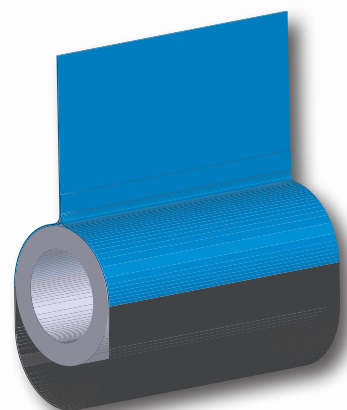
Industrial interior door to 17.5 m², wind resistant to 5 Beaufort (29 - 38 km/h)



Properties

- max. surface area (WxH) = 17.5 m²
- max. W x H = 3500 x 5000 mm
- wind resistant to 5 Beaufort (29 - 38 km/h)
- opening speed max. 2 m/s
- closing speed 0.5 m/s
- 1.2 mm thick door curtain in blue, red, grey, orange, yellow, black or white, including transparent window section
- self-repairing
- self-supporting lateral guides.

Flex Edge bottom beam



www.novospeedsolutions.com

The Novoferm Novo Speed Flex® is an electrically driven High Speed door for use in industrial and utility buildings for interior applications. It can be used for energy saving, draught exclusion, climate control and the partitioning of rooms.

Components and construction

The Novo Speed Flex® has a door leaf 1.2 mm thick made of a polyester-reinforced PVC with a transparent window section between approx. 1250 and 1850 mm from the floor. The closing side of the door curtain consists of a flexible soft bottom beam (Flex Edge®). The extruded aluminium columns ensure the guidance of the door leaf. These form one taut unit with the brackets for the fastening of the roller and protective hood. From 12 m² door balancing is applied as standard.

Materials

The guides and the roller are aluminium. The protective hood is PVC. All PVC parts used can be recycled.

Colours

The door curtain is available in the colours blue (standard), orange, yellow, black, grey, red or white and is provided as standard with a window section.

Dimensions

- max. width (W) 3500 mm
- max. height (H) 5000 mm
- max. surface area (W x H) 17.5 m²
- max. wind force 5 Beaufort (29 - 38 km/h)
- lateral space at the guides 160 mm
- depth top hood 420 mm
- required fitting depth for the top hood 650 mm
- required space above 450 mm

Drive

The drive consists of an industrial tube motor assembled in the roller. As a result the necessary lateral space is minimal. The drive is on the right-hand side of the roller as standard

Control and operation

The control system regulates a multitude of functions such as:

- adjustable open time
- continuously variable speed regulation by frequency control for opening and closing the door
- service and run mode
- 7-segment display for controlling the various functions
- choice of permanently open or permanently shut

Other forms of operation that can be connected to the standard control box are:

- operation by pull switch, key-operated switch, push-button, photocell, radar, induction loop detection or by radio control with transmitter and receiver.

Performance

- opening speed max. 2 m/s
- closing speed approx. 0.5 m/s

Protection

- safety light curtain (IP65 and to max. height of 2500 mm). If this curtain is interrupted by an obstacle the door will automatically fully open until the screen is freed again.

Structural provisions and connection

- in normal circumstances no special structural provisions are required for the assembly and fitting of a Novo Speed Flex®. The self-supporting construction must only be fixed at the floor and the roller
- there must be a wall socket within a radius of 500 mm of where the control box will be positioned for the electrical connection (CEE form blue, 1 x 230V fused, slow operation 16 A and fitted with an circuit-breaker of at least 300 mA). As standard this is fitted at a height of approx. 1500 mm from the floor on the drive side.

Technical details electric motor

mains voltage LNPE~230V/50Hz/16AT
degree of protection IP55
consumed power max. 2,2 kW

Extras (subject to surcharge)

Control and operation

- operation by push-buttons, pull switches, photocell, radar, induction loop or by radio control. Other forms of operation on request
- 'half height' setting (for personnel access)
- door interlock control in combination with another door
- integrated and illuminated push-button set (open-stop-close) in the guide column
- illuminated push-button set (open-stop-close) in surface-mounted box.

Protection

- connection of traffic lights (red/green or red and green) or orange flashing light
- mechanical emergency unlocking (after unlocking the door opens).

Construction

- guide columns in customer-specified RAL colour (powder coating)
- PVC hood over the roller and drive
- full colour printing of the door panel (on request).

