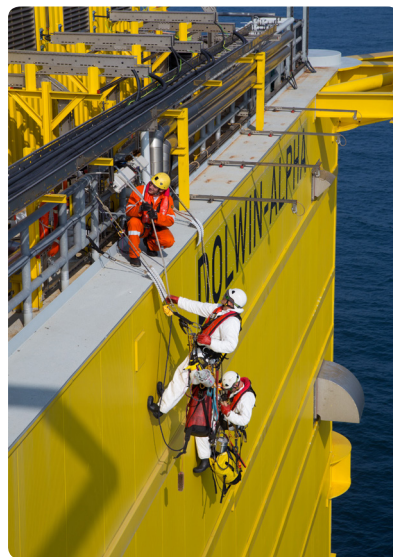




## TECHNICAL BROCHURE

# Blast and fire rated architectural items





# INDEX PRODUCTS

| REFERENCE                        | DESCRIPTION                             | SHEET  |
|----------------------------------|---|--------|
| <b>Heavy duty external doors</b> |   |        |
|                                  | Introduction                            | 1.1.1  |
|                                  | IDM SLH A60                             | 1.1.2  |
|                                  | IDM SLH A60-DS                          | 1.1.3  |
|                                  | IDM SLH H120                            | 1.1.4  |
|                                  | IDM DLH A60                             | 1.1.5  |
|                                  | IDM DLH A60-DS                          | 1.1.6  |
|                                  | IDM DLH A60 with removable toppanel     | 1.1.7  |
|                                  | IDM DLH A60-XL                          | 1.1.8  |
|                                  | IDM DLH H120                            | 1.1.9  |
|                                  | IDM SLS A60                             | 1.1.10 |
|                                  | IDM SLS H120                            | 1.1.11 |
|                                  | Ergo Latch®                             | 1.1.12 |
|                                  | Sill options                            | 1.1.13 |
|                                  | IDM SLH A60-FP                          | 1.1.14 |
|                                  | IDM DLH A60-FP                          | 1.1.15 |
| <b>Internal hinged doors</b>     |   |        |
|                                  | IDM SLH A60-INT                         | 1.2.1  |
|                                  | IDM DLH A60-INT                         | 1.2.2  |
|                                  | IDM SLH A60-FP                          | 1.2.3  |
|                                  | IDM DLH A60-FP                          | 1.2.4  |
| <b>External sandwich walls</b>   |   |        |
|                                  | G21 Fire Panel A60 galvanized steel     | 1.3.1  |
|                                  | G21 Fire Panel A60 stainless steel      | 1.3.2  |
|                                  | G21 Fire Panel H120 galvanized steel    | 1.3.3  |
|                                  | G21 Fire Panel H120 stainless steel     | 1.3.4  |
|                                  | G21 Fire Panel J10                      | 1.3.5  |
|                                  | G21 Fire Panel J15                      | 1.3.6  |
|                                  | G21 Fire Panel J30                      | 1.3.7  |
|                                  | G21 Fire Panel J60                      | 1.3.8  |
|                                  | G21 Fire Panel with blast relief option | 1.3.9  |
|                                  | G21 Blast Panel A60 galvanized steel    | 1.3.10 |
|                                  | G21 Blast Panel H120 galvanized steel   | 1.3.11 |

# INDEX PRODUCTS

| REFERENCE                           | DESCRIPTION                               | SHEET |
|-------------------------------------|---|-------|
| <b>Prefabricated external walls</b> |   |       |
|                                     | IDM Propanel A60                          | 1.4.1 |
|                                     | IDM Propanel H60/H120                     | 1.4.2 |
|                                     | IDM panel welded                          | 1.4.3 |
|                                     | IDM blast / firewall                      | 1.4.4 |
|                                     | Loose louvres                             | 1.4.5 |
|                                     | Framed louvres                            | 1.4.6 |
|                                     | Cladding                                  | 1.4.7 |
| <b>Internal sandwich walls</b>      |   |       |
|                                     | G21 Fire Panel A60                        | 1.5.1 |
|                                     | G21 Fire Panel H120                       | 1.5.2 |
|                                     | G21 Fire Panel B15                        | 1.5.3 |
|                                     | G21 Fire Panel A60 suspended ceiling      | 1.5.4 |
| <b>Window Units</b>                 |   |       |
|                                     | IDM WU A60/H120                           | 1.6.1 |
| <b>Prefabricated module</b>         |   |       |
|                                     | IG21 mobile blast / fire resistant module | 1.7.1 |

InterDam reserves the right to change the design and specifications.

# HEAVY DUTY EXTERNAL DOORS

## INTRODUCTION

Version 18.1 - sheet 1.1.1

### DOORS

InterDam doors are of the heavy duty fully certified range and cover fire ratings from A0 up to H120 including jet fire requirements. Doors are also able to withstand blast overpressure up to 2.5 bar blast when required. Doors will be pre-assembled as complete units and provided with heavy duty special designed hardware. The construction and design of the doors will be as per our standard certified designs, and as indicated on the standard detail datasheets. The door designs are versatile and can be adapted to meet our client's particular requirements. Early consultation can result in a detailed design best suited to the overall platform design philosophy.

### HARDWARE

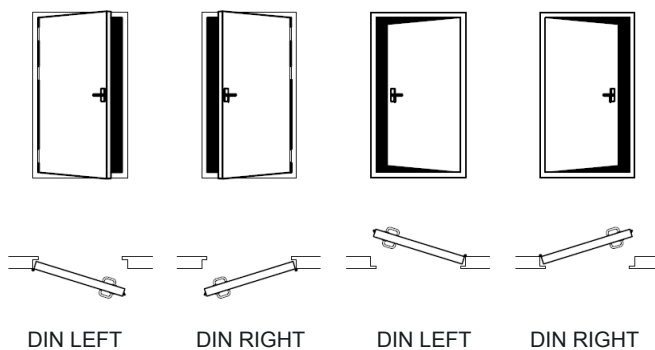
Most of the standard door hardware is carefully selected from the market. Special and fully stainless steel hardware are designed in-house and manufactured with selected subcontractors specifically for InterDam. Replacement hardware can be ordered by using our reference codes. Normally replacement hardware is available from stock.

### INSTALLATION

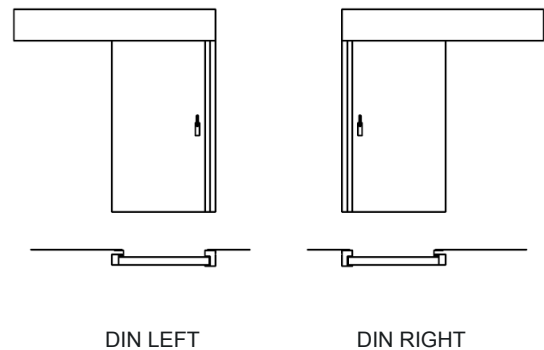
Doors are supplied as integral units with their frames and hardware. Operational testing is carried out before they leave the workshop.

Installation of the doors can either be done by welding the frames to the main construction or alternatively and much easier, doors can be bolted by means of selftapping screws in pre-drilled holes around the framing.

OPENING DIRECTION HINGED DOORS



SLIDING DIRECTION SLIDING DOORS



# HEAVY DUTY EXTERNAL DOORS

IDM - SLH - A60

Version 18.1 - sheet 1.1.2

## PERFORMANCES:

- Fire resistance A0/A60 in accordance with IMO Resolution MSC.307(88)  
Fire-post-blast© certified
- Explosion resistance Up to 2.5 bar blast overpressure (no destruction of performance of door)
- Tightness Standard air leakage rate 0.32 m³/m²/h @ 50 Pa
- Sound insulation Standard sound insulation value of 36 dBA
- Thermal insulation U = 0.5 W/m²K
- Ease of operation Standard opening pressure of 11 kg
- Durability Design lifetime of over 30 years with normal maintenance
- Efficiency for maintenance Easy accessibility and spare parts are normally available from stock
  
- Optional - bullet resistance FB7 non-splinter in accordance with EN 1522/1523  
- in full compliance with Norsok C-002
- Aesthetics Thickness: 75 mm  
Doors can be supplied in:
  - galvanized steel DX51D + Z275 - standard 2-layer onshore coating
  - galvanized steel DX51D + Z275 - standard 3-layer offshore coating
  - stainless steel 316L - micropeen / glassblasting finish
  - stainless steel 316L - standard 2-layer onshore coating
  - stainless steel 316L - standard 3-layer offshore coating
 Standard RAL end colours included and chosen by client

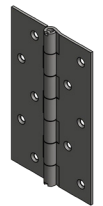
## HARDWARE:



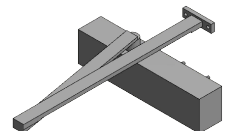
STAINLESS STEEL  
CENTER LATCH  
ID211 / ID221



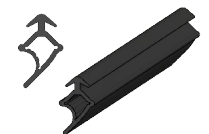
DOORHANDLE  
ID155 / ID156



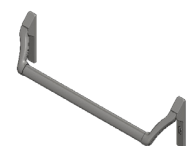
STAINLESS STEEL  
HINGES ID254



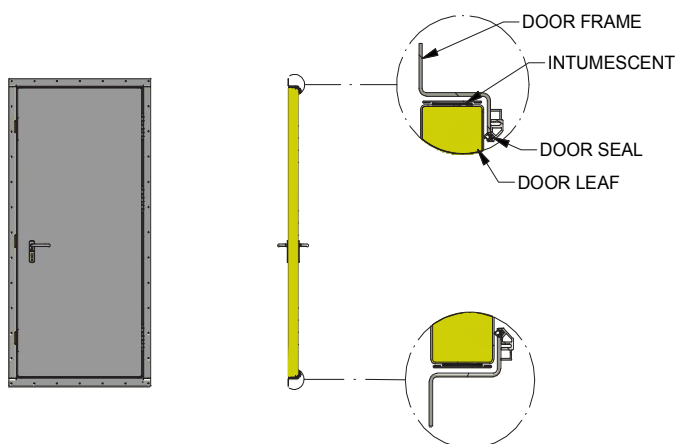
DOORCLOSER ID261



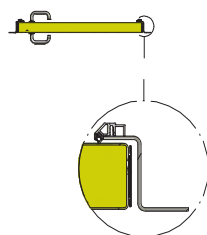
SEAL ID164



PANIC OPENING DEVICE  
ID281



DETAIL VERTICAL SECTION



DETAIL HORIZONTAL SECTION

# HEAVY DUTY EXTERNAL DOORS

IDM - SLH - A60 - DS

Version 18.1 - sheet 1.1.3

## PERFORMANCES:

- Fire resistance A0/A60 in accordance with IMO Resolution MSC.307(88)
- Explosion resistance Up to 2.5 bar blast overpressure (no destruction of performance of door)
- Airtightness Standard air leakage rate: 0.33 m<sup>3</sup>/m<sup>2</sup>/h @ + 50 Pa (Norsok C-002 and EN 12207)
- Weathertightness No leakage according Norsok C-002 (hose testing)  
No leakage according EN 12208 (+ 2100 Pa, air pressure)
- Sound insulation Standard sound insulation value of 36 dBA
- Thermal insulation U = 0.5 W/m<sup>2</sup>K
- Ease of operation Standard opening pressure of 11 kg
- Durability Design lifetime of over 30 years with normal maintenance
- Efficiency for maintenance Easy accessibility and spare parts are normally available from stock
- Optional - bullet resistance FB7 non-splinter in accordance with EN 1522/1523  
- in full compliance with Norsok C-002
- Aesthetics Thickness: 115 mm  
Doors can be supplied in:
  - galvanized steel DX51D + Z275 - standard 2-layer onshore coating
  - galvanized steel DX51D + Z275 - standard 3-layer offshore coating
  - stainless steel 316L - micropeen / glassblasting finish
  - stainless steel 316L - standard 2-layer onshore coating
  - stainless steel 316L - standard 3-layer offshore coating
 Standard RAL end colours included and chosen by client

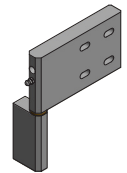
## HARDWARE:



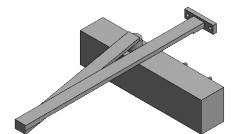
STAINLESS STEEL CENTER LATCH ID211 / ID221



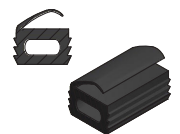
DOORHANDLE ID155 / ID156



STAINLESS STEEL HINGES ID200



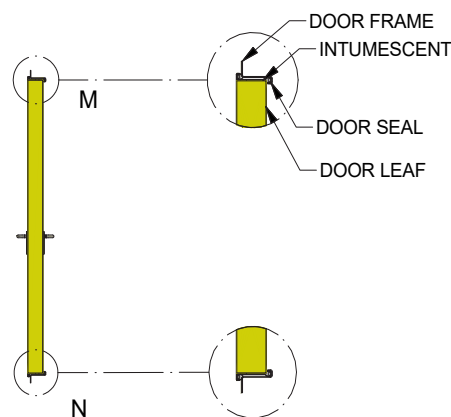
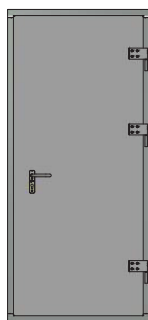
DOORCLOSER ID261



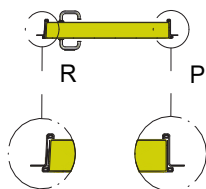
SEAL ID163



PANIC OPENING DEVICE ID281



DETAIL VERTICAL SECTION



DETAIL HORIZONTAL SECTION

# HEAVY DUTY EXTERNAL DOORS

IDM - SLH - H120

Version 18.1 - sheet 1.1.4

## PERFORMANCES:

- Fire resistance H0/H60/H120 in accordance with IMO Resolution MSC.307(88)
  - Explosion resistance Up to 2.5 bar blast overpressure (no destruction of performance of door)
  - Tightness Standard air leakage rate 0.32 m<sup>3</sup>/m<sup>2</sup>/h @ 50 Pa
  - Sound insulation Standard sound insulation value of 36 dBA
  - Thermal insulation U = 0.5 W/m<sup>2</sup>K
  - Ease of operation Standard opening pressure of 11 kg
  - Durability Design lifetime of over 30 years with normal maintenance
  - Efficiency for maintenance Easy accessibility and spare parts are normally available from stock
- 
- Optional
    - jet fire resistance
    - bullet resistance FB7 non-splinter in accordance with EN 1522/1523
    - in full compliance with Norsok C-002
- 
- Aesthetics
    - Thickness: 115 mm
    - Doors can be supplied in:
      - galvanized steel DX51D + Z275 - standard 2-layer onshore coating
      - galvanized steel DX51D + Z275 - standard 3-layer offshore coating
      - stainless steel 316L - micropeen / glassblasting finish
      - stainless steel 316L - standard 2-layer onshore coating
      - stainless steel 316L - standard 3-layer offshore coating
    - Standard RAL end colours included and chosen by client

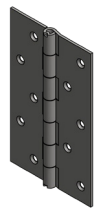
## HARDWARE:



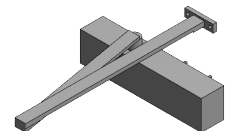
STAINLESS STEEL CENTER LATCH ID211 / ID221



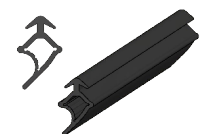
DOORHANDLE ID155 / ID156



STAINLESS STEEL HINGES ID254



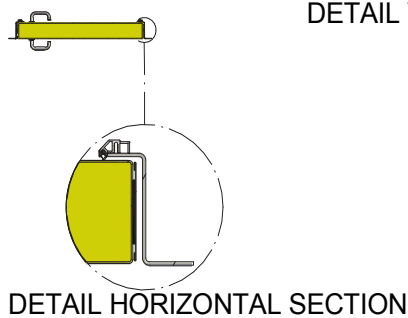
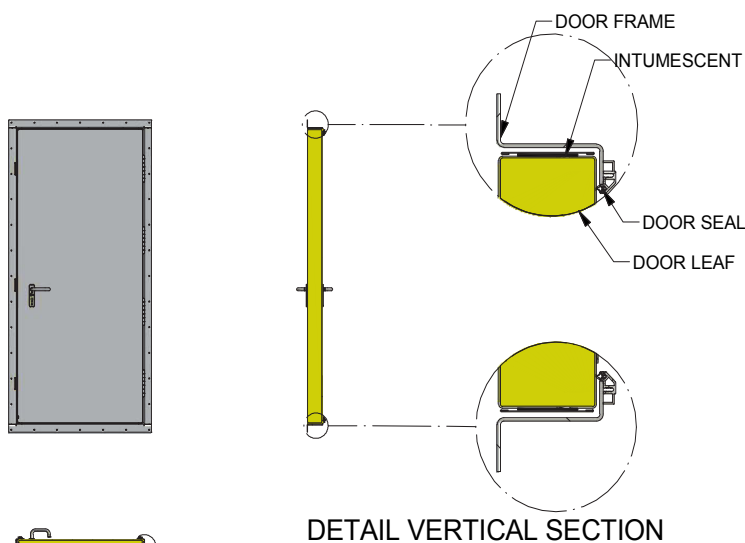
DOORCLOSER ID261



SEAL ID164



PANIC OPENING DEVICE ID281





# HEAVY DUTY EXTERNAL DOORS

IDM - DLH - A60

Version 18.1 - sheet 1.1.5

## PERFORMANCES:

- Fire resistance A0/A60 in accordance with IMO Resolution MSC.307(88)
- Explosion resistance Up to 2.5 bar blast overpressure (no destruction of performance of door)
- Tightness Standard air leakage rate 0.32 m<sup>3</sup>/m<sup>2</sup>/h @ 50 Pa
- Sound insulation Standard sound insulation value of 36 dBA
- Thermal insulation U = 0.5 W/m<sup>2</sup>K
- Ease of operation Standard opening pressure of 11 kg
- Durability Design lifetime of over 30 years with normal maintenance
- Efficiency for maintenance Easy accessibility and spare parts are normally available from stock
  
- Optional - bullet resistance FB7 non-splinter in accordance with EN 1522/1523  
 - in full compliance with Norsok C-002
- Aesthetics Thickness: 75 mm  
 Doors can be supplied in:
  - galvanized steel DX51D + Z275 - standard 2-layer onshore coating
  - galvanized steel DX51D + Z275 - standard 3-layer offshore coating
  - stainless steel 316L - micropeen / glassblasting finish
  - stainless steel 316L - standard 2-layer onshore coating
  - stainless steel 316L - standard 3-layer offshore coating
 Standard RAL end colours included and chosen by client

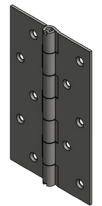
## HARDWARE:



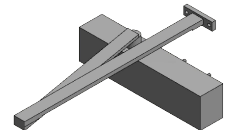
STAINLESS STEEL  
CENTER LATCH  
ID211 / ID221



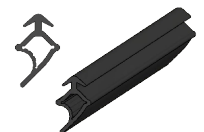
DOORHANDLE  
ID155 / ID156



STAINLESS STEEL  
HINGES ID254



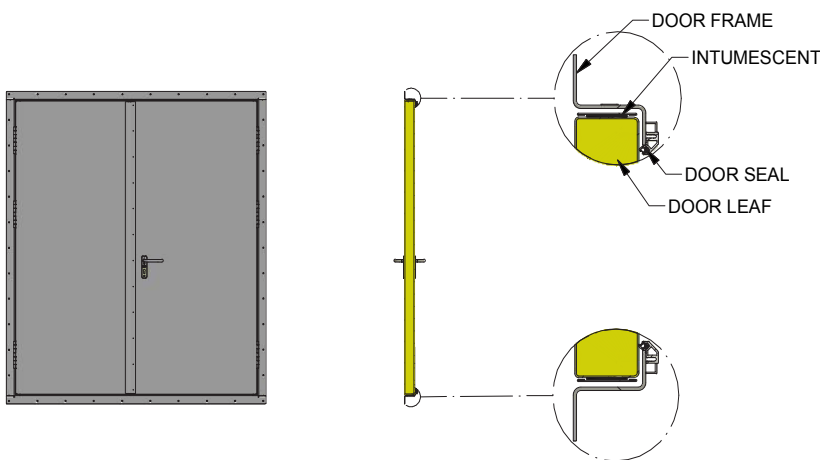
DOORCLOSER ID261



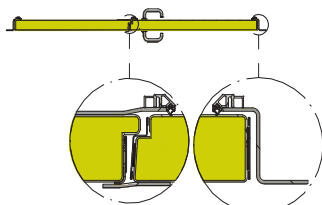
SEAL ID164



PANIC OPENING DEVICE  
ID281



DETAIL VERTICAL SECTION



DETAIL HORIZONTAL SECTION

# HEAVY DUTY EXTERNAL DOORS

IDM - DLH - A60 - DS

Version 18.1 - sheet 1.1.6

## PERFORMANCES:

- Fire resistance A0/A60 in accordance with IMO Resolution MSC.307(88)
- Explosion resistance Up to 2.5 bar blast overpressure (no destruction of performance of door)
- Airtightness Standard air leakage rate: 0.37 m<sup>3</sup>/m<sup>2</sup>/h @ + 50 Pa (Norsok C-002 and EN 12207)
- Weathertightness No leakage according Norsok C-002 (hose testing)  
No leakage according EN 12208 (+ 1050 Pa, air pressure)
- Sound insulation Standard sound insulation value of 36 dBA
- Thermal insulation U = 0.5 W/m<sup>2</sup>K
- Ease of operation Standard opening pressure of 11 kg
- Durability Design lifetime of over 30 years with normal maintenance
- Efficiency for maintenance Easy accessibility and spare parts are normally available from stock
- Optional - bullet resistance FB7 non-splinter in accordance with EN1522/1523  
- in full compliance with Norsok C-002
- Aesthetics Thickness: 115 mm  
Doors can be supplied in:
  - galvanized steel DX51D + Z275 - standard 2-layer onshore coating
  - galvanized steel DX51D + Z275 - standard 3-layer offshore coating
  - stainless steel 316L - micropeen / glassblasting finish
  - stainless steel 316L - standard 2-layer onshore coating
  - stainless steel 316L - standard 3-layer offshore coating

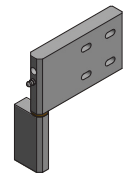
## HARDWARE:



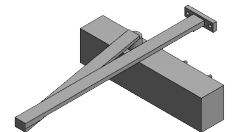
STAINLESS STEEL CENTER LATCH ID211 / ID221



DOORHANDLE ID155 / ID156



STAINLESS STEEL HINGES ID200



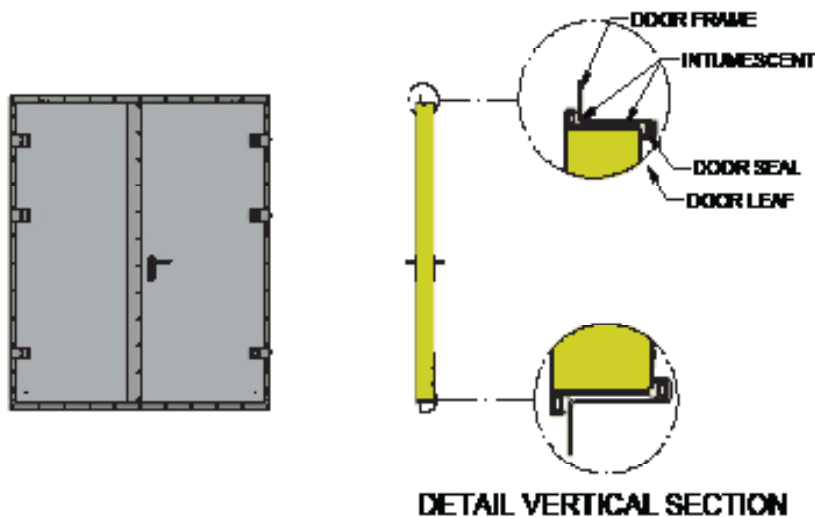
DOORCLOSER ID261



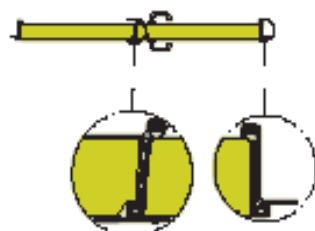
SEAL ID163



PANIC OPENING DEVICE ID281



DETAIL VERTICAL SECTION



DETAIL HORIZONTAL SECTION

# HEAVY DUTY EXTERNAL DOORS

IDM - DLH - A60 WITH REMOVABLE TOPPANEL

Version 18.1 - sheet 1.1.7

## PERFORMANCES:

- Fire resistance A0/A60 in accordance with IMO Resolution MSC.307(88)
- Explosion resistance Up to 2.5 bar blast overpressure (no destruction of performance of door)
- Tightness Standard air leakage rate 0.32 m<sup>3</sup>/m<sup>2</sup>/h @ 50 Pa
- Sound insulation Standard sound insulation value of 36 dBA
- Thermal insulation U = 0.8 W/m<sup>2</sup>K
- Ease of operation Standard opening pressure of 11 kg
- Durability Design lifetime of over 30 years with normal maintenance
- Efficiency for maintenance Easy accessibility and spare parts are normally available from stock
  
- Optional - bullet resistance FB7 non-splinter in accordance with EN 1522/1523  
 - in full compliance with Norsok C-002
- Aesthetics Thickness: 75 mm  
 Doors can be supplied in:
  - galvanized steel DX51D + Z275 - standard 2-layer onshore coating
  - galvanized steel DX51D + Z275 - standard 3-layer offshore coating
  - stainless steel 316L - micropeen / glassblasting finish
  - stainless steel 316L - standard 2-layer or 3-layer coating
 Standard RAL end colours included and chosen by client  
 Removable type by bolting - provided with lifting lugs  
 For fire rated toppanels a horizontal stiffener will be integrated  
 For blast (and fire) rated toppanels a horizontal beam will be applied
  
- Toppanel information

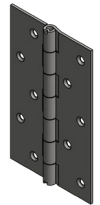
## HARDWARE:



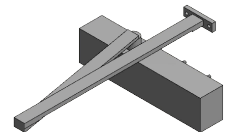
STAINLESS STEEL CENTER LATCH ID211 / ID221



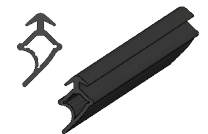
DOORHANDLE ID155 / ID156



STAINLESS STEEL HINGES ID254



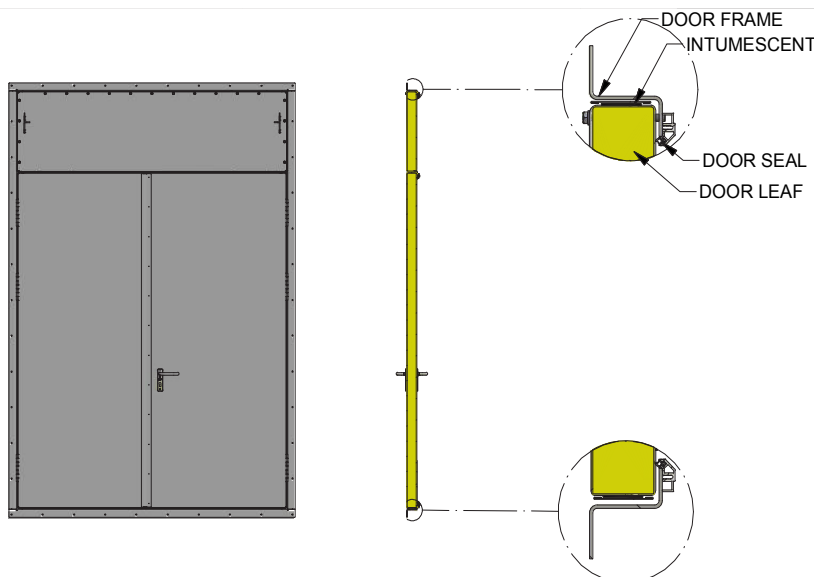
DOORCLOSER ID261



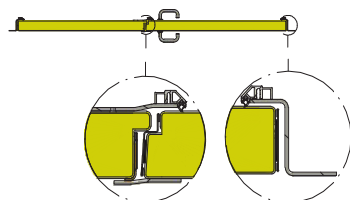
SEAL ID164



PANIC OPENING DEVICE ID281



DETAIL VERTICAL SECTION



DETAIL HORIZONTAL SECTION

# HEAVY DUTY EXTERNAL DOORS

IDM - DLH - A60 - XL

Version 18.1 - sheet 1.1.8

## PERFORMANCES:

- Fire resistance A0/A60 in accordance with IMO Resolution MSC.307(88) for extra large double doors sized to **H4200 x W3300 mm**
  - Explosion resistance Up to 2.5 bar blast overpressure (no destruction of performance of door)
  - Tightness Standard air leakage rate 0.32 m<sup>3</sup>/m<sup>2</sup>/h @ 50 Pa
  - Sound insulation Standard sound insulation value of 36 dBA
  - Thermal insulation U = 0.5 W/m<sup>2</sup>K
  - Ease of operation Standard opening pressure of 11 kg
  - Durability Design lifetime of over 30 years with normal maintenance
  - Efficiency for maintenance Easy accessibility and spare parts are normally available from stock
  
  - Optional - bullet resistance FB7 non-splinter in accordance with EN 1522/1523
  - in full compliance with Norsok C-002
  - Aesthetics Thickness: 115 mm
- Doors can be supplied in:
- galvanized steel DX51D + Z275 - standard 2-layer onshore coating
  - galvanized steel DX51D + Z275 - standard 3-layer offshore coating
  - stainless steel 316L - micropeen / glassblasting finish
  - stainless steel 316L - standard 2-layer onshore coating
  - stainless steel 316L - standard 3-layer offshore coating
- Standard RAL end colours included and chosen by client

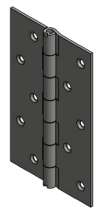
## HARDWARE:



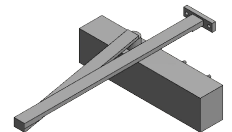
STAINLESS STEEL CENTER LATCH ID211 / ID221



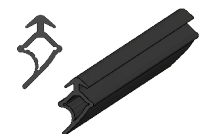
DOORHANDLE ID155 / ID156



STAINLESS STEEL HINGES ID254



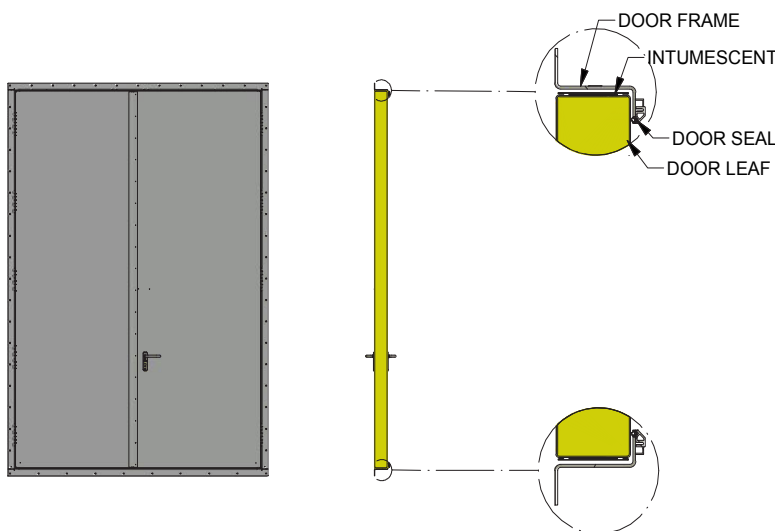
DOORCLOSER ID261



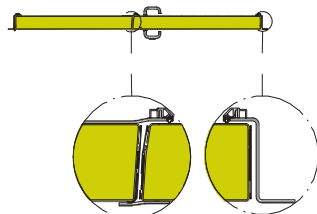
SEAL ID164



PANIC OPENING DEVICE ID281



DETAIL VERTICAL SECTION



DETAIL HORIZONTAL SECTION

# HEAVY DUTY EXTERNAL DOORS

IDM - DLH - H120

Version 18.1 - sheet 1.1.9

## PERFORMANCES:

- Fire resistance H0/H60/H120 in accordance with IMO Resolution MSC.307(88)
- Explosion resistance Up to 2.5 bar blast overpressure (no destruction of performance of door)
- Tightness Standard air leakage rate 0.32 m<sup>3</sup>/m<sup>2</sup>/h @ 50 Pa
- Sound insulation Standard sound insulation value of 36 dBA
- Thermal insulation U = 0.5 W/m<sup>2</sup>K
- Ease of operation Standard opening pressure of 11 kg
- Durability Design lifetime of over 30 years with normal maintenance
- Efficiency for maintenance Easy accessibility and spare parts are normally available from stock
  
- Optional
  - jet fire resistance
  - bullet resistance FB7 non-splinter in accordance with EN 1522/1523
  - in full compliance with Norsok C-002
  
- Aesthetics
  - Thickness: 115 mm
  - Doors can be supplied in:
    - galvanized steel DX51D + Z275 - standard 2-layer onshore coating
    - galvanized steel DX51D + Z275 - standard 3-layer offshore coating
    - stainless steel 316L - micropeen / glassblasting
    - stainless steel 316L - standard 2-layer onshore coating
    - stainless steel 316L - standard 3-layer offshore coating
  - Standard RAL end colours included and chosen by client

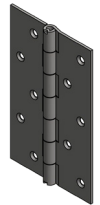
## HARDWARE:



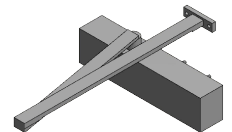
STAINLESS STEEL CENTER LATCH ID211 / ID221



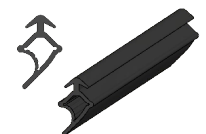
DOORHANDLE ID155 / ID156



STAINLESS STEEL HINGES ID254



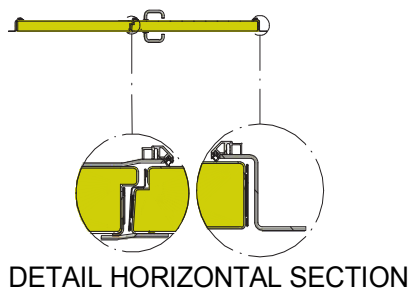
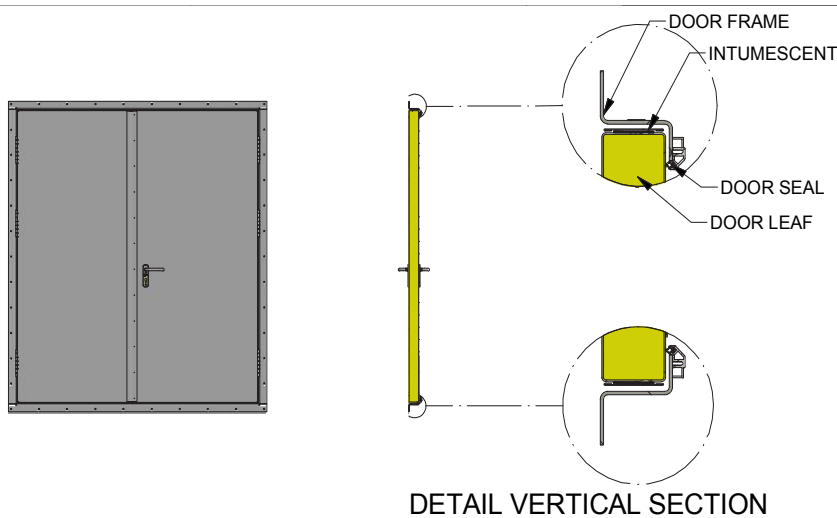
DOORCLOSER ID261



SEAL ID164



PANIC OPENING DEVICE ID281



# HEAVY DUTY EXTERNAL DOORS

IDM - SLS - A60

Version 18.1 - sheet 1.1.0

## PERFORMANCES:

- Fire resistance A0/A60 in accordance with IMO Resolution MSC.307(88)
- Explosion resistance Up to 1 bar blast overpressure (no destruction of performance of door)
- Tightness Suitable for offshore environment - gastight and weathertight
- Sound insulation Standard sound insulation value of 35 dBA (can be increased to max. 51 dBA)
- Thermal insulation  $U = 0.5 \text{ W/m}^2\text{K}$
- Ease of operation Standard opening pressure of 11 kg (see Ergo Latch® sheet no. 1.1.12 to reduce opening force to 50N)
- Durability Design lifetime of over 30 years with normal maintenance
- Efficiency for maintenance Easy accessibility and spare parts are normally available from stock
- Optional
  - bullet resistance BF7 non-splinter in accordance with EN 1522/1523
  - in full compliance with Norsok C-002
  - operation by electrical, pneumatic or Ergo Latch® system
- Aesthetics
  - Thickness: 75 mm
  - Doors can be supplied in:
    - galvanized steel DX51D + Z275 - standard 2-layer onshore coating
    - galvanized steel DX51D + Z275 - standard 3-layer offshore coating
    - stainless steel 316L - micropeen / glassblasting finish
    - stainless steel 316L - standard 2-layer onshore coating
    - stainless steel 316L - standard 3-layer offshore coating
  - Standard RAL end colours included and chosen by client

## HARDWARE:



STAINLESS STEEL HOOKLATCH ID311



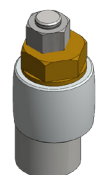
DOORHANDLE ID361 / ID362



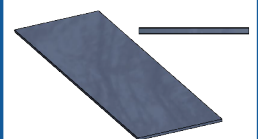
STAINLESS STEEL RAILING ID331



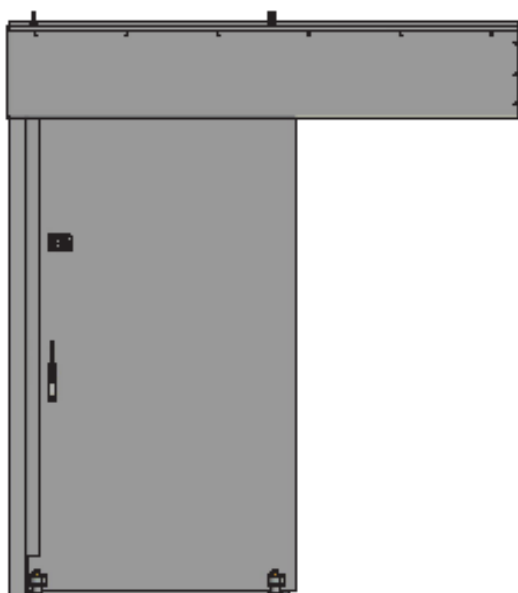
STAINLESS STEEL ROLLERS ID332



ROLLERGUIDE ID322



SEALS ID161



FRONT VIEW



DETAIL VERTICAL SECTION



DETAIL HORIZONTAL SECTION

# HEAVY DUTY EXTERNAL DOORS

IDM - SLS - H120

Version 18.1 - sheet 1.1.11

## PERFORMANCES:

- Fire resistance H0/H60/H120 in accordance with IMO Resolution MSC.307(88)
  - Explosion resistance Up to 1 bar blast overpressure (no destruction of performance of door)
  - Tightness Suitable for offshore environment - gastight and weathertight
  - Sound insulation Standard sound insulation value of 35 dBA (can be increased to max. 51 dBA)
  - Thermal insulation  $U = 0.5 \text{ W/m}^2\text{K}$
  - Ease of operation Standard opening pressure of 11 kg (see Ergo Latch® sheet no. 1.1.12 to reduce opening force to 50N)
  - Durability Design lifetime of over 30 years with normal maintenance
  - Efficiency for maintenance Easy accessibility and spare parts are normally available from stock
  - Optional
    - jet fire resistance
    - bullet resistance BF7 non-splinter in accordance with EN 1522/1523
    - in full compliance with Norsok C-002
    - operation by electrical, pneumatic or Ergo Latch® system
- Thickness: 115 mm
- Doors can be supplied in:
- galvanized steel DX51D + Z275 - standard 2-layer onshore coating
  - galvanized steel DX51D + Z275 - standard 3-layer offshore coating
  - stainless steel 316L - micropeen / glassblasting finish
  - stainless steel 316L - standard 2-layer onshore coating
  - stainless steel 316L - standard 3-layer offshore coating

## HARDWARE:



STAINLESS STEEL HOOKLATCH ID311



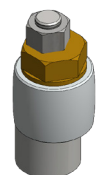
DOORHANDLE ID361 / ID362



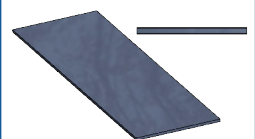
STAINLESS STEEL RAILING ID331



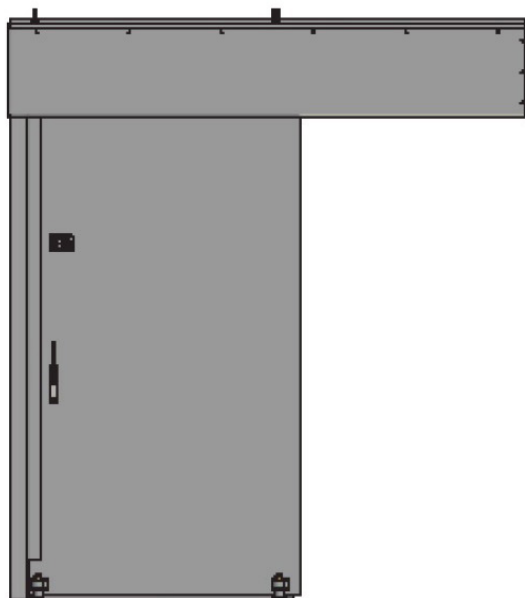
STAINLESS STEEL ROLLERS ID332



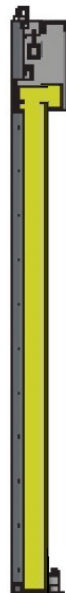
ROLLERGUIDE ID322



SEALS ID161



FRONT VIEW



DETAIL VERTICAL SECTION



DETAIL HORIZONTAL SECTION

# HEAVY DUTY EXTERNAL DOORS

ERGO LATCH®

Version 18.1 - sheet 1.1.12

## PERFORMANCES:

- Initial opening force of only 50N
- In compliance with Norsok standard C-002 for opening of heavy duty existing and new sliding doors without the need to apply electric or pneumatic power operation
- Multiplies the force at the door handle with a factor of 10 at the push-off device
- External dimensions are to DIN standards for easy replacement in already installed doors
- Perfectly suits applications in a harsh offshore/onshore environment

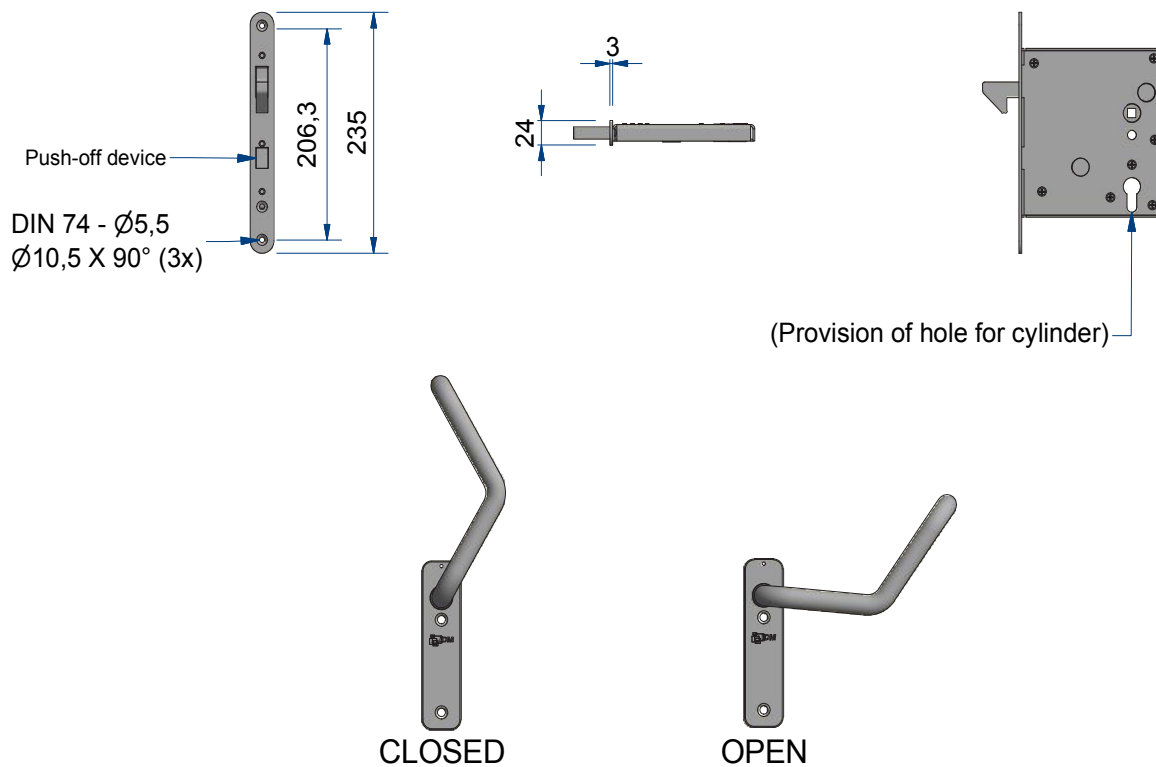
## MATERIALS:

All components made in-house and from stainless steel

- Design incorporates longstanding practical with heavy duty door hardware
- Short delivery times from the InterDam warehouses

[See on YouTube how it works!](#)

## OVERVIEW:



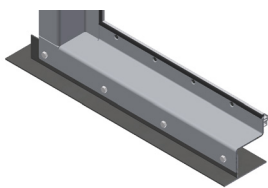
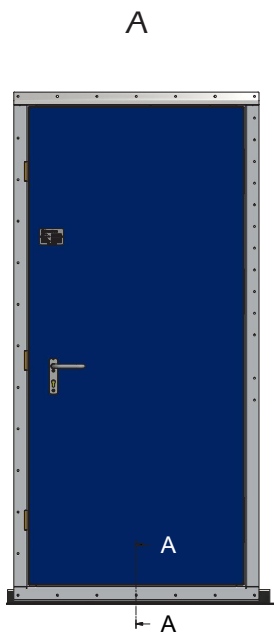


# HEAVY DUTY EXTERNAL DOORS

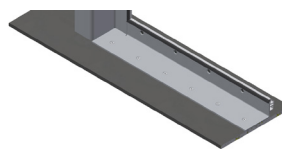
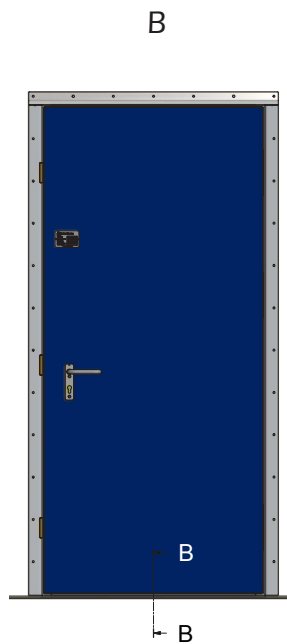
## SILL OPTIONS

Version 18.1 - sheet 1.1.13

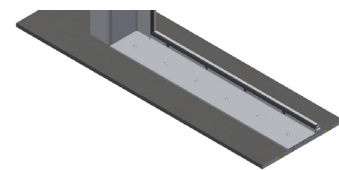
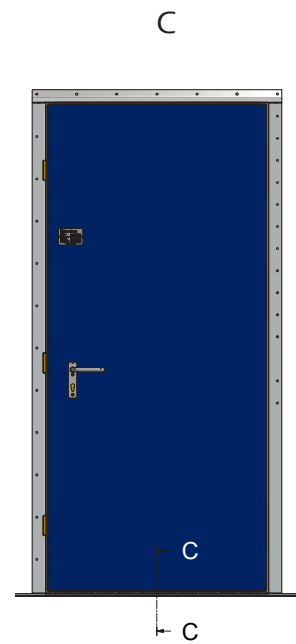
### OPTIONS:



- Standard Z-frame for bolting to steel bulkhead
- Standard sill height 55 mm

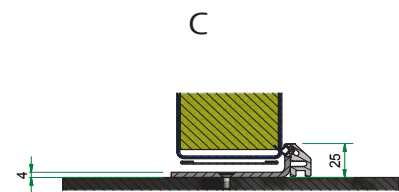
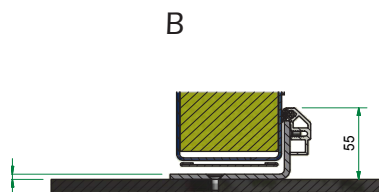
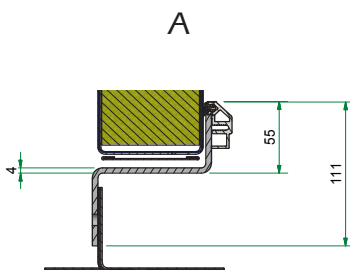


- Flat bottom frame for bolting into the deck / flooring
- Standard sill height 55 mm



- Flat bottom frame for bolting into the deck / flooring
- Standard sill height 25 mm
- According Norsok C-002 standard

### BOTTOM DETAILS:



# EXTERNAL HINGED DOORS

IDM - SLH - A60 - FP

Version 18.1 - sheet 1.1.14

## PERFORMANCES:

- Fire resistance A0/A60 in accordance with IMO Resolution MSC.307(88)
  - Explosion resistance Up to 0,3 bar blast overpressure
  - Tightness Standard air leakage rate 0.5 m<sup>3</sup>/m<sup>2</sup>/h @ 50 Pa
  - Sound insulation Standard sound insulation value of 36 dBA
  - Thermal insulation U = 0.71 W/m<sup>2</sup>K
  - Ease of operation Standard opening pressure of 65 N
  - Durability Design lifetime of over 30 years with normal maintenance
  - Efficiency for maintenance Easy accessibility and spare parts are normally available from stock
  - Aesthetics Thickness: 73 mm
- galvanized steel DX51D + Z275 - standard 2-layer onshore coating
  - galvanized steel DX51D + Z275 - standard 3-layer offshore coating
  - stainless steel 316L - standard 2-layer onshore coating
  - stainless steel 316L - standard 3-layer offshore coating
- Standard RAL end colours included and chosen by client

## HARDWARE:



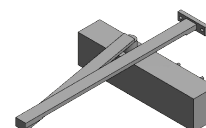
CENTER LATCH  
ID1120 / ID1130



DOORHANDLE  
ID1140



STAINLESS STEEL  
HINGES ID252



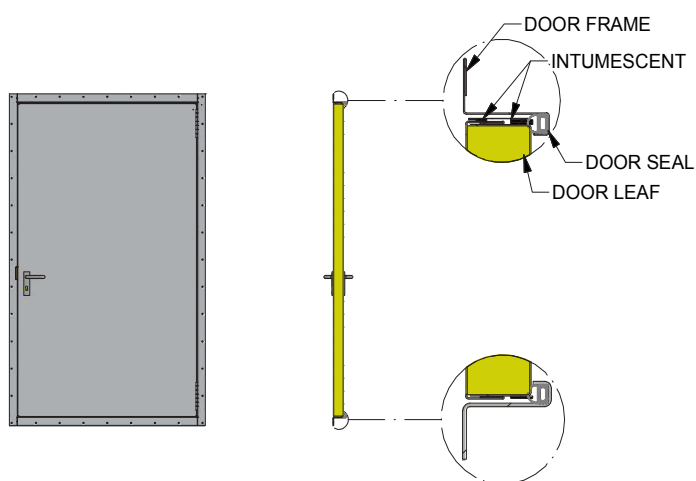
DOORCLOSER ID260



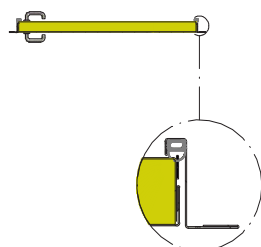
SEAL ID122



PANIC OPENING DEVICE  
ID281 / ID1171



DETAIL VERTICAL SECTION



DETAIL HORIZONTAL SECTION

# EXTERNAL HINGED DOORS

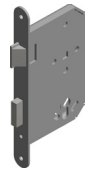
IDM - DLH - A60 - FP

Version 18.1 - sheet 1.1.15

## PERFORMANCES:

- Fire resistance A0/A60 in accordance with IMO Resolution MSC.307(88)
  - Explosion resistance Up to 0,3 bar blast overpressure
  - Tightness Standard air leakage rate  $<0.5 \text{ m}^3/\text{m}^2/\text{h}$  @ 50 Pa
  - Sound insulation Standard sound insulation value of 36 dBA
  - Thermal insulation  $U = 0.71 \text{ W/m}^2\text{K}$
  - Ease of operation Standard opening pressure of 65 N
  - Durability Design lifetime of over 30 years with normal maintenance
  - Efficiency for maintenance Easy accessibility and spare parts are normally available from stock
  - Aesthetics Thickness: 73 mm
- galvanized steel DX51D + Z275 - standard 2-layer onshore coating
  - galvanized steel DX51D + Z275 - standard 3-layer offshore coating
  - stainless steel 316L - standard 2-layer onshore coating
  - stainless steel 316L - standard 3-layer offshore coating
- Standard RAL end colours included and chosen by client

## HARDWARE:



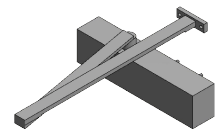
CENTER LATCH  
ID1120 / ID1130



DOORHANDLE  
ID1140



STAINLESS STEEL  
HINGES ID252



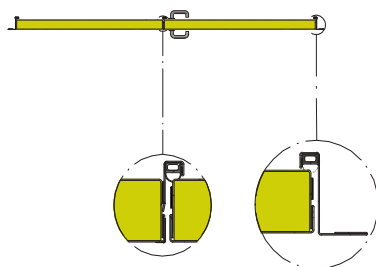
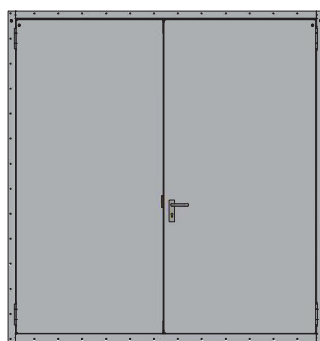
DOORCLOSER ID260



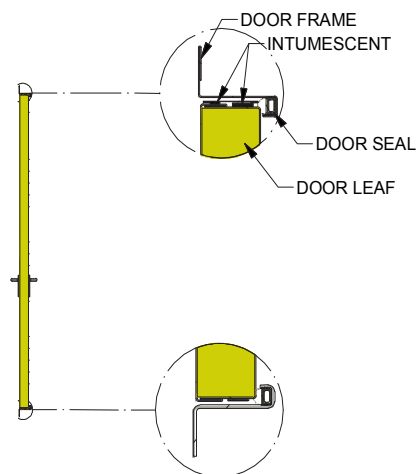
SEAL ID122



PANIC OPENING DEVICE  
ID281 / ID1171



DETAIL HORIZONTAL SECTION



DETAIL VERTICAL SECTION

# INTERNAL HINGED DOORS

IDM - SLH - A60 - INT

Version 18.1 - sheet 1.2.1

## PERFORMANCES:

- Fire resistance A0/A60 in accordance with IMO Resolution MSC.307(88)
  - Tightness Smoke tight
  - Sound insulation Standard sound insulation value of 36 dBA
  - Thermal insulation  $U = 0.71 \text{ W/m}^2\text{K}$  (doorleaf)
  - Ease of operation Standard opening pressure of 65 N
  - Durability Design lifetime of over 30 years with normal maintenance
  - Efficiency for maintenance Easy accessibility and spare parts are normally available from stock
  - Aesthetics Thickness: 73 mm
- galvanized steel DX51D + Z275 - standard 2-layer onshore coating
  - stainless steel 316L - micropeen / glassblasting finish
  - stainless steel 316L - standard 2-layer onshore coating
- Standard RAL end colours included and chosen by client

## HARDWARE:



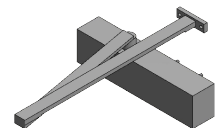
CENTER LATCH  
ID1120 / ID1130



DOORHANDLE  
ID1140



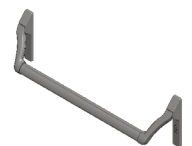
STAINLESS STEEL  
HINGES ID252



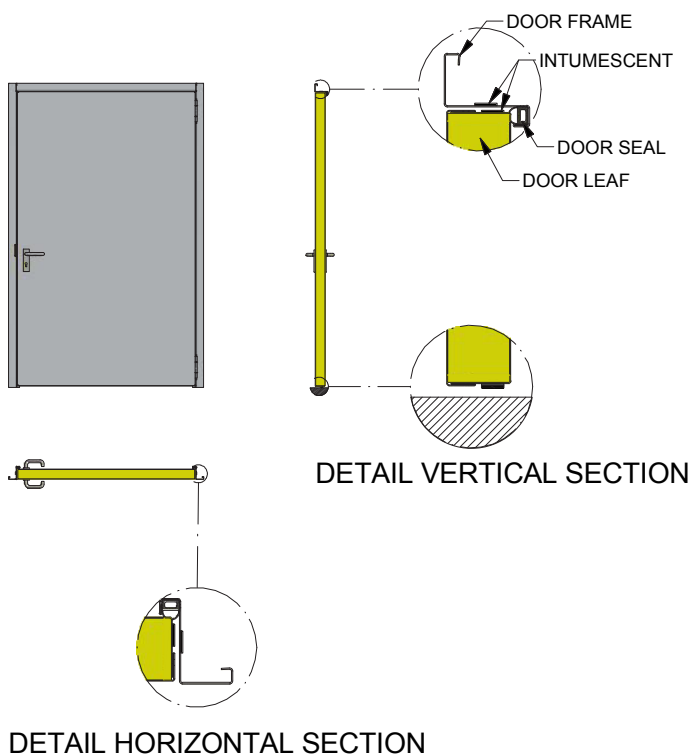
DOORCLOSER ID260



SEAL ID122



PANIC OPENING DEVICE  
ID281 / ID1171



# INTERNAL HINGED DOORS

IDM - DLH - A60 - INT

Version 18.1 - sheet 1.2.2

## PERFORMANCES:

- Fire resistance A0/A60 in accordance with IMO Resolution MSC.307(88)
  - Tightness Smoke tight
  - Sound insulation Standard sound insulation value of 36 dBA
  - Thermal insulation  $U = 0.71 \text{ W/m}^2\text{K}$  (doorleaf)
  - Ease of operation Standard opening pressure of 65 N
  - Durability Design lifetime of over 30 years with normal maintenance
  - Efficiency for maintenance Easy accessibility and spare parts are normally available from stock
  - Aesthetics Thickness: 73 mm
- galvanized steel DX51D + Z275 - standard 2-layer onshore coating
  - stainless steel 316L - micropeen / glassblasting finish
  - stainless steel 316L - standard 2-layer onshore coating
- Standard RAL end colours included and chosen by client

## HARDWARE:



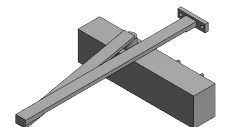
CENTER LATCH  
ID1120 / ID1130



DOORHANDLE  
ID1140



STAINLESS STEEL  
HINGES ID252



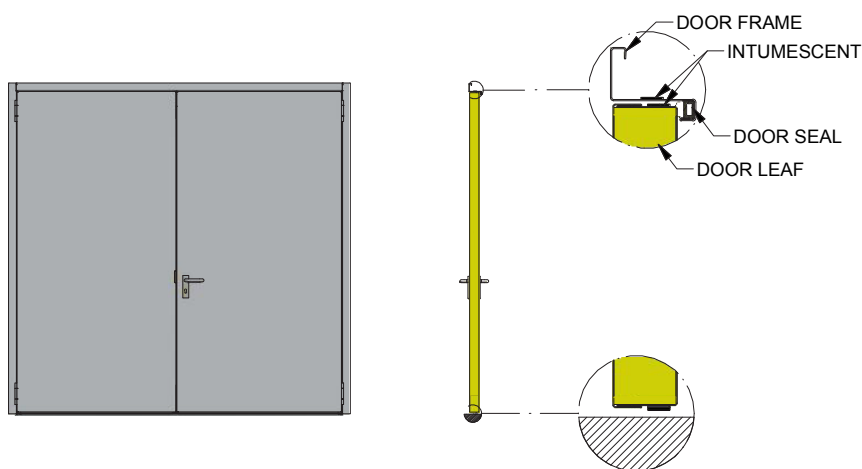
DOORCLOSER ID260



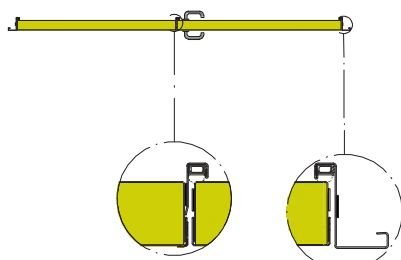
SEAL ID122



PANIC OPENING DEVICE  
ID281 / ID1171



DETAIL VERTICAL SECTION



DETAIL HORIZONTAL SECTION

# INTERNAL HINGED DOORS

IDM - SLH - A60 - FP

Version 18.1 - sheet 1.2.3

## PERFORMANCES:

- Fire resistance A0/A60 in accordance with IMO Resolution MSC.307(88)
- Explosion resistance Up to 0,05 bar blast overpressure
- Tightness Standard air leakage rate 0.5 m<sup>3</sup>/m<sup>2</sup>/h @ 50 Pa
- Sound insulation Standard sound insulation value of 36 dBA
- Thermal insulation U = 0.71 W/m<sup>2</sup>K
- Ease of operation Standard opening pressure of 65 N
- Durability Design lifetime of over 30 years with normal maintenance
- Efficiency for maintenance Easy accessibility and spare parts are normally available from stock
- Aesthetics Thickness: 73 mm
  - galvanized steel DX51D + Z275 - standard 2-layer onshore coating
  - stainless steel 316L - micropeen / glassblasting finish
  - stainless steel 316L - standard 2-layer onshore coatingStandard RAL end colours included and chosen by client

## HARDWARE:



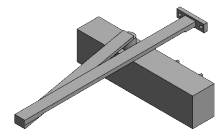
CENTER LATCH  
ID1120 / ID1130



DOORHANDLE  
ID1140



STAINLESS STEEL  
HINGES ID252



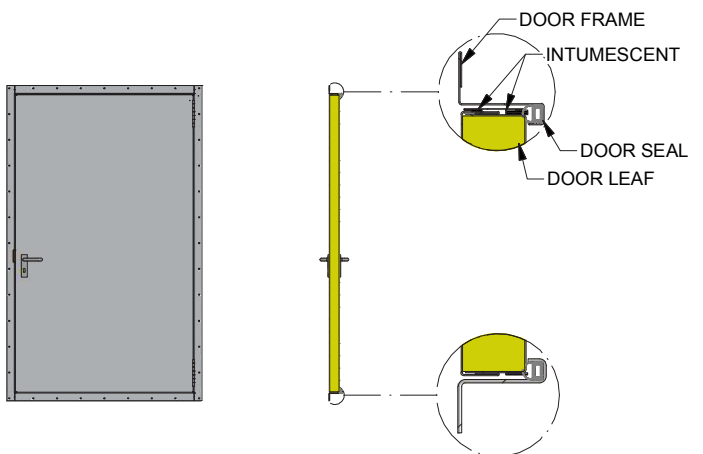
DOORCLOSER ID260



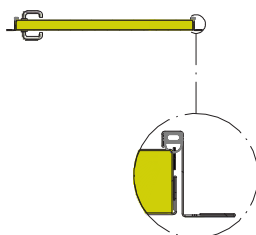
SEAL ID122



PANIC OPENING DEVICE  
ID281 / ID1171



DETAIL VERTICAL SECTION



DETAIL HORIZONTAL SECTION

# INTERNAL HINGED DOORS

IDM - DLH - A60 - FP

Version 18.1 - sheet 1.2.4

## PERFORMANCES:

- |                              |  |
|------------------------------|--|
| ■ Fire resistance            | A0/A60 in accordance with IMO Resolution MSC.307(88)                     |
| ■ Explosion resistance       | Up to 0,05 bar blast overpressure  |
| ■ Tightness                  | Standard air leakage rate $<0.5 \text{ m}^3/\text{m}^2/\text{h}$ @ 50 Pa |
| ■ Sound insulation           | Standard sound insulation value of 36 dBA                                |
| ■ Thermal insulation         | $U = 0.71 \text{ W/m}^2\text{K}$   |
| ■ Ease of operation          | Standard opening pressure of max. 65 N                                   |
| ■ Durability                 | Design lifetime of over 30 years with normal maintenance                 |
| ■ Efficiency for maintenance | Easy accessibility and spare parts are normally available from stock     |
| ■ Aesthetics                 | Thickness: 73 mm   |
- galvanized steel DX51D + Z275 - standard 2-layer onshore coating  
 - stainless steel 316L - micropeen / glassblasting finish  
 - stainless steel 316L - standard 2-layer onshore coating  
 Standard RAL end colours included and chosen by client

## HARDWARE:



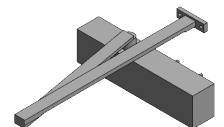
CENTER LATCH  
ID1120 / ID1130



DOORHANDLE  
ID1140



STAINLESS STEEL  
HINGES ID252



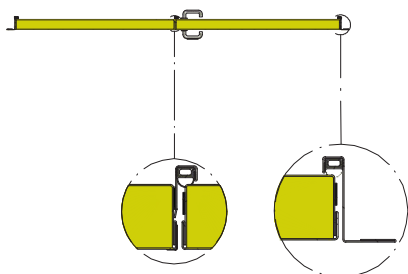
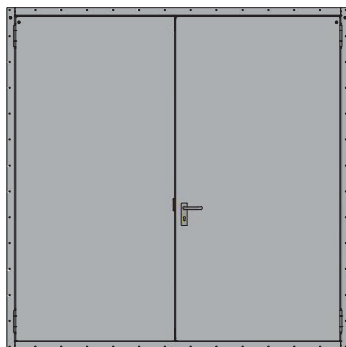
DOORCLOSER ID260



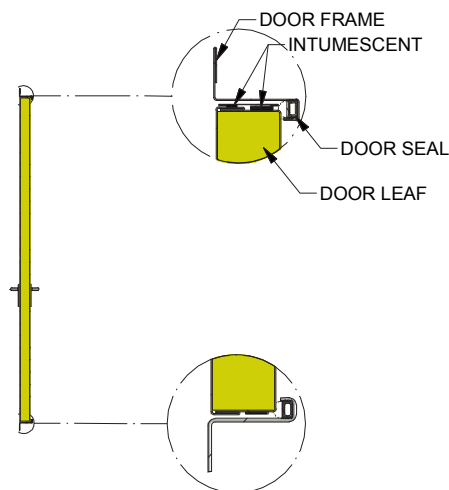
SEAL ID122



PANIC OPENING DEVICE  
ID281 / ID1171



DETAIL HORIZONTAL SECTION



DETAIL VERTICAL SECTION

# EXTERNAL SANDWICH WALLS

G21 FIRE PANEL - A60 - GALVANIZED STEEL

Version 18.1 - sheet 1.3.1

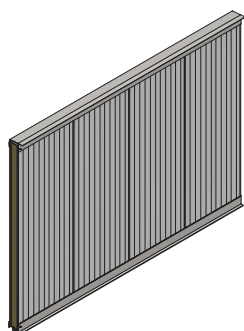
## PERFORMANCES:

|                      |   |
|----------------------|---|
| ■ Fire resistance    | A0/A60 in accordance with IMO Resolution MSC.307(88)  |
| ■ Sound insulation   | 32 dB in accordance with EN ISO 140-3   |
| ■ Thermal insulation | $U = 0.32 \text{ W/m}^2\text{K}$  |
| ■ Durability         | Design life of 30 years with minimum maintenance  |
| ■ Weight             | 26.4 kg / m <sup>2</sup> at 120 mm panel thickness  |
| ■ Core Density       | 120 kg/m <sup>3</sup> - EN 1602:1997  |
| ■ Air tightness      | 0.1 m <sup>3</sup> /m <sup>2</sup> /h at 50 Pa, according to EN 12114:2001  |
| ■ Water tightness    | Class C according to EN 14509:2007<br>No water penetration at test pressure 2100 Pa, test method A, EN 12865:2002 |

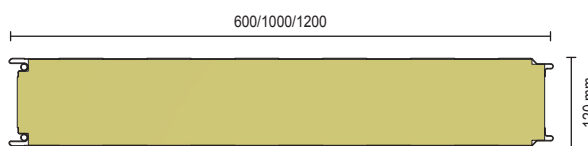
## MATERIALS:

|                 |  |
|-----------------|--|
| ■ Core material | 120 mm mineral wool (non-combustible)  |
| ■ Panel skins   | 0.7 mm coil coated galvanized steel sheets S280GD + ZA with HPS200 ultra coating<br>Thickness 200 micron - EN 13523-1<br>Corrosion resistance 1000 h salt spray test - EN 13523-8<br>Corrosion resistance 1000 h humidity - EN 13523-25<br>Corrosion resistance category RC5 - EN 10169:2010<br>UV resistance RUV4 - EN 10169:2010 |

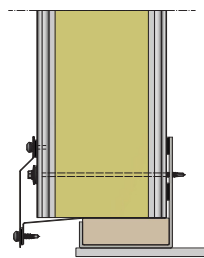
## OVERVIEW:



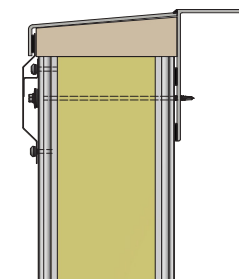
FRONT VIEW (3D)



HORIZONTAL SECTION



BOTTOM SECTION



TOP SECTION



# EXTERNAL SANDWICH WALLS

G21 FIRE PANEL - A60 - STAINLESS STEEL

Version 18.1 - sheet 1.3.2

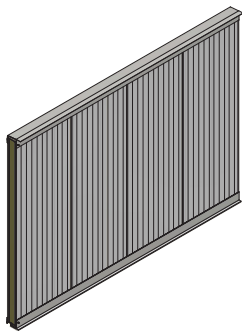
## PERFORMANCES:

|                      |   |
|----------------------|---|
| ■ Fire resistance    | A0/A60 in accordance with IMO Resolution MSC.307(88)  |
| ■ Sound insulation   | 32 dB in accordance with EN ISO 140-3   |
| ■ Thermal insulation | $U = 0.32 \text{ W/m}^2\text{K}$  |
| ■ Durability         | Design life of 30 years with minimum maintenance  |
| ■ Weight             | 26.4 kg / m <sup>2</sup> at 120 mm panel thickness  |
| ■ Core Density       | 120 kg/m <sup>3</sup> - EN 1602:1997  |
| ■ Air tightness      | 0.1 m <sup>3</sup> /m <sup>2</sup> /h at 50 Pa, according to EN 12114:2001  |
| ■ Water tightness    | Class C according to EN 14509:2007<br>No water penetration at test pressure 2100 Pa, test method A, EN 12865:2002 |

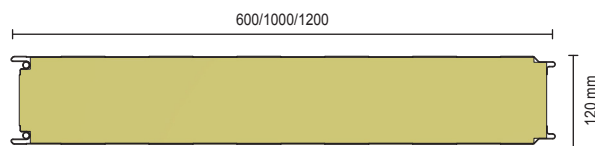
## MATERIALS:

|                          |   |
|--------------------------|---|
| ■ Core material          | 120 mm mineral wool (non-combustible)   |
| ■ Panel skins            | 0.6 mm stainless steel 316 (1.4404)<br>- standard S-profile for internal skin and M2-profile for external skin                                |
| ■ Optional with coating: | Internal skin: 25 micron PVDF standard RAL colour 7038 or 9003<br>External skin: 2B finish or 25 micron PVDF standard RAL colour 7038 or 9003 |

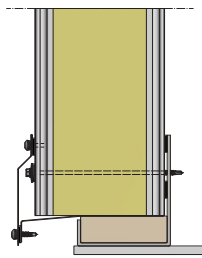
## OVERVIEW:



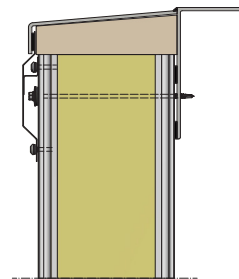
FRONT VIEW (3D)



HORIZONTAL SECTION



BOTTOM SECTION



TOP SECTION

# EXTERNAL SANDWICH WALLS

G21 FIRE PANEL - H120 - GALVANIZED STEEL

Version 18.1 - sheet 1.3.3

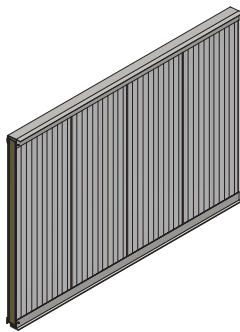
## PERFORMANCES:

|                      |   |
|----------------------|---|
| ■ Fire resistance    | H0/H60/H120 in accordance with IMO Resolution MSC.307(88)   |
| ■ Sound insulation   | 32 dB in accordance with EN ISO 140-3   |
| ■ Thermal insulation | $U = 0.23 \text{ W/m}^2\text{K}$  |
| ■ Durability         | Design life of 30 years with minimum maintenance  |
| ■ Weight             | 33 kg / m <sup>2</sup> at 172 mm panel thickness  |
| ■ Core Density       | 120 kg/m <sup>3</sup> - EN 1602:1997  |
| ■ Air tightness      | 0.1 m <sup>3</sup> /m <sup>2</sup> /h at 50 Pa, according to EN 12114:2001  |
| ■ Water tightness    | Class C according to EN 14509:2007<br>No water penetration at test pressure 2100 Pa, test method A, EN 12865:2002 |

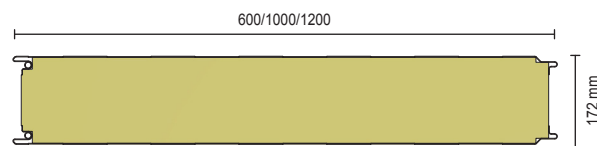
## MATERIALS:

|                 |  |
|-----------------|--|
| ■ Core material | 172 mm mineral wool (non-combustible)  |
| ■ Panel skins   | 0.7 mm coil coated galvanized steel sheets S280GD + ZA with HPS200 ultra coating<br>Thickness 200 micron - EN 13523-1<br>Corrosion resistance 1000 h salt spray test - EN 13523-8<br>Corrosion resistance 1000 h humidity - EN 13523-25<br>Corrosion resistance category RC5 - EN 10169:2010<br>UV resistance RUV4 - EN 10169:2010 |

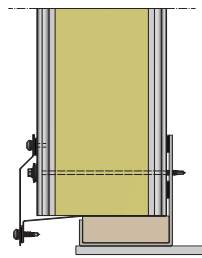
## OVERVIEW:



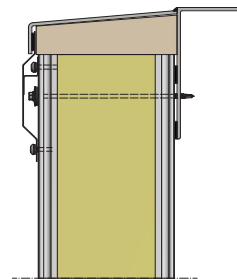
FRONT VIEW (3D)



HORIZONTAL SECTION



BOTTOM SECTION



TOP SECTION

# EXTERNAL SANDWICH WALLS

G21 FIRE PANEL - H120 - STAINLESS STEEL

Version 18.1 - sheet 1.3.4

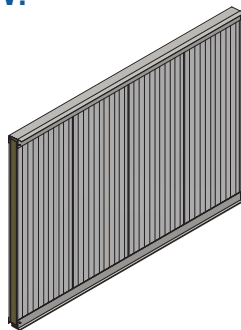
## PERFORMANCES:

- Fire resistance H0/H60/H120 in accordance with IMO Resolution MSC.307(88)
- Sound insulation 32 dB in accordance with EN ISO 140-3
- Thermal insulation  $U = 0.23 \text{ W/m}^2\text{K}$
- Durability Design life of 30 years with minimum maintenance
- Weight  $33 \text{ kg / m}^2$  at 172 mm panel thickness
- Core Density  $120 \text{ kg/m}^3$  - EN 1602:1997
- Air tightness  $0.1 \text{ m}^3/\text{m}^2/\text{h}$  at 50 Pa, according to EN 12114:2001
- Water tightness Class C according to EN 14509:2007  
No water penetration at test pressure 2100 Pa, test method A, EN 12865:2002

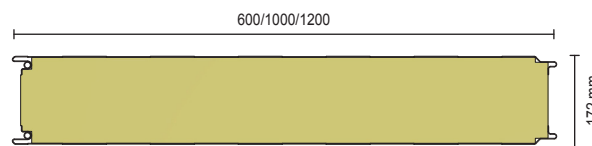
## MATERIALS:

- Core material 172 mm mineral wool (non-combustible)
- Panel skins 0.6 mm stainless steel 316 (1.4404)  
- standard S-profile for internal skin and M2-profile for external skin
- Optional with coating: Internal skin: 25 micron PVDF standard RAL colour 7038 or 9003  
External skin: 2B finish or 25 micron PVDF standard RAL colour 7038 or 9003

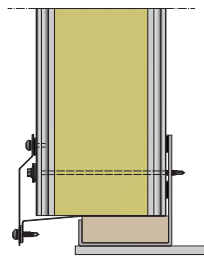
## OVERVIEW:



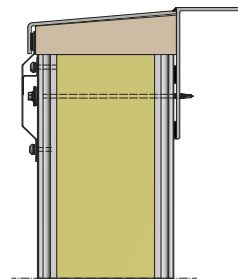
FRONT VIEW (3D)



HORIZONTAL SECTION



BOTTOM SECTION



TOP SECTION

# EXTERNAL SANDWICH WALLS

G21 FIRE PANEL - J10

Version 18.1 - sheet 1.3.5

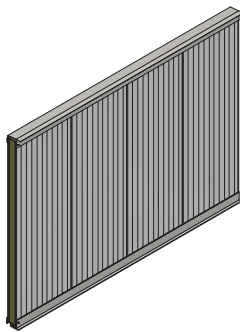
## PERFORMANCES:

|                      |   |
|----------------------|---|
| ■ Fire resistance    | J10 in accordance with ISO 22899-1  |
| ■ Sound insulation   | 32 dB in accordance with EN ISO 140-3   |
| ■ Thermal insulation | $U = 0.32 \text{ W/m}^2\text{K}$  |
| ■ Durability         | Design life of 30 years with minimum maintenance  |
| ■ Weight             | 26.4 kg / m <sup>2</sup> at 120 mm panel thickness  |
| ■ Core Density       | 120 kg/m <sup>3</sup> - EN 1602:1997  |
| ■ Air tightness      | 0.1 m <sup>3</sup> /m <sup>2</sup> /h at 50 Pa, according to EN 12114:2001  |
| ■ Water tightness    | Class C according to EN 14509:2007<br>No water penetration at test pressure 2100 Pa, test method A, EN 12865:2002 |

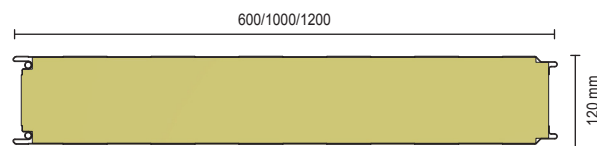
## MATERIALS:

|                 |  |
|-----------------|--|
| ■ Core material | 120 mm mineral wool (non-combustible)  |
| ■ Panel skins   | 0.7 mm coil coated galvanized steel sheets S280GD + ZA with HPS200 ultra coating<br>(optional stainless steel 316)<br>Thickness 200 micron - EN 13523-1<br>Corrosion resistance 1000 h salt spray test - EN 13523-8<br>Corrosion resistance 1000 h humidity - EN 13523-25<br>Corrosion resistance category RC5 - EN 10169:2010<br>UV resistance RUV4 - EN 10169:2010 |

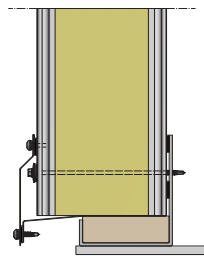
## OVERVIEW:



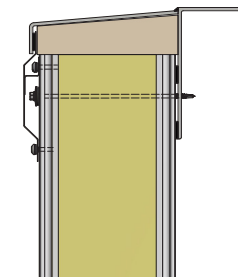
FRONT VIEW (3D)



HORIZONTAL SECTION



BOTTOM SECTION



TOP SECTION

# EXTERNAL SANDWICH WALLS

G21 FIRE PANEL - J15

Version 18.1 - sheet 1.3.6

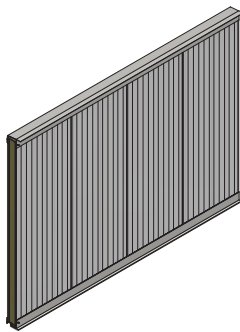
## PERFORMANCES:

|                      |   |
|----------------------|---|
| ■ Fire resistance    | J15 in accordance with ISO 22899-1  |
| ■ Sound insulation   | 32 dB in accordance with EN ISO 140-3   |
| ■ Thermal insulation | $U = 0.32 \text{ W/m}^2\text{K}$  |
| ■ Durability         | Design life of 30 years with minimum maintenance  |
| ■ Weight             | 26.4 kg / m <sup>2</sup> at 120 mm panel thickness  |
| ■ Core Density       | 120 kg/m <sup>3</sup> - EN 1602:1997  |
| ■ Air tightness      | 0.1 m <sup>3</sup> /m <sup>2</sup> /h at 50 Pa, according to EN 12114:2001  |
| ■ Water tightness    | Class C according to EN 14509:2007<br>No water penetration at test pressure 2100 Pa, test method A, EN 12865:2002 |

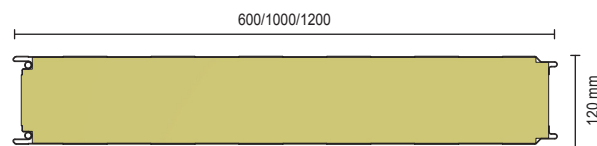
## MATERIALS:

|                     |   |
|---------------------|---|
| ■ Core material     | 120 mm mineral wool (non-combustible)   |
| ■ Fire exposed side | stainless steel 316 2B (optional 0.6 mm skin 25 micron PVDF standard RAL colour)  |
| ■ Non-fire side     | 0.7 mm coil coated galvanized steel sheet S280GD + ZA with HPS200 ultra coating<br>(optional stainless steel 316)<br>Thickness 200 micron - EN 13523-1<br>Corrosion resistance 1000 h salt spray test - EN 13523-8<br>Corrosion resistance 1000 h humidity - EN 13523-25<br>Corrosion resistance category RC5 - EN 10169:2010<br>UV resistance RUV4 - EN 10169:2010 |

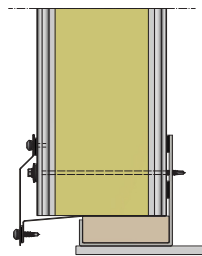
## OVERVIEW:



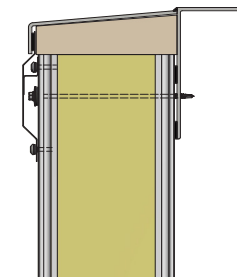
FRONT VIEW (3D)



HORIZONTAL SECTION



BOTTOM SECTION



TOP SECTION

# EXTERNAL SANDWICH WALLS

G21 FIRE PANEL - J30

Version 18.1 - sheet 1.3.7

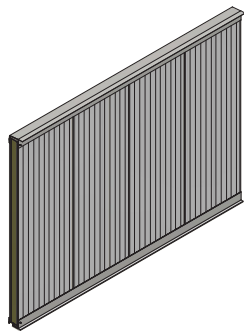
## PERFORMANCES:

|                      |   |
|----------------------|---|
| ■ Fire resistance    | J30 in accordance with ISO 22899-1  |
| ■ Sound insulation   | 32 dB in accordance with EN ISO 140-3   |
| ■ Thermal insulation | $U = 0.32 \text{ W/m}^2\text{K}$  |
| ■ Durability         | Design life of 30 years with minimum maintenance  |
| ■ Weight             | 26.4 kg / m <sup>2</sup> at 120 mm panel thickness  |
| ■ Core Density       | 120 kg/m <sup>3</sup> - EN 1602:1997  |
| ■ Air tightness      | 0.1 m <sup>3</sup> /m <sup>2</sup> /h at 50 Pa, according to EN 12114:2001  |
| ■ Water tightness    | Class C according to EN 14509:2007<br>No water penetration at test pressure 2100 Pa, test method A, EN 12865:2002 |

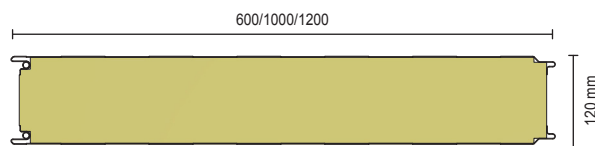
## MATERIALS:

|                     |   |
|---------------------|---|
| ■ Core material     | 120 mm mineral wool (non-combustible)   |
| ■ Fire exposed side | stainless steel 316 2B (optional 0.6 mm skin 25 micron PVDF standard RAL colour)  |
| ■ Non-fire side     | 0.7 mm coil coated galvanized steel sheet S280GD + ZA with HPS200 ultra coating<br>(optional stainless steel 316)<br>Thickness 200 micron - EN 13523-1<br>Corrosion resistance 1000 h salt spray test - EN 13523-8<br>Corrosion resistance 1000 h humidity - EN 13523-25<br>Corrosion resistance category RC5 - EN 10169:2010<br>UV resistance RUV4 - EN 10169:2010 |

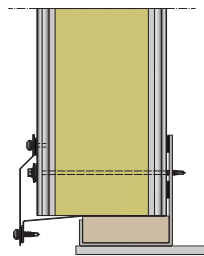
## OVERVIEW:



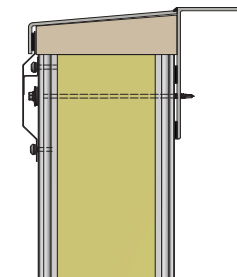
FRONT VIEW (3D)



HORIZONTAL SECTION



BOTTOM SECTION



TOP SECTION

# EXTERNAL SANDWICH WALLS

G21 FIRE PANEL - J60

Version 18.1 - sheet 1.3.8

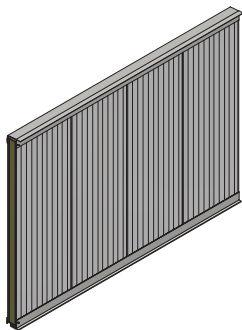
## PERFORMANCES:

|                      |   |
|----------------------|---|
| ■ Fire resistance    | J60 in accordance with ISO 22899-1  |
| ■ Sound insulation   | 32 dB in accordance with EN ISO 140-3   |
| ■ Thermal insulation | $U = 0.23 \text{ W/m}^2\text{K}$  |
| ■ Durability         | Design life of 30 years with minimum maintenance  |
| ■ Weight             | 33 kg / m <sup>2</sup> at 172 mm panel thickness  |
| ■ Core Density       | 120 kg/m <sup>3</sup> - EN 1602:1997  |
| ■ Air tightness      | 0.1 m <sup>3</sup> /m <sup>2</sup> /h at 50 Pa, according to EN 12114:2001  |
| ■ Water tightness    | Class C according to EN 14509:2007<br>No water penetration at test pressure 2100 Pa, test method A, EN 12865:2002 |

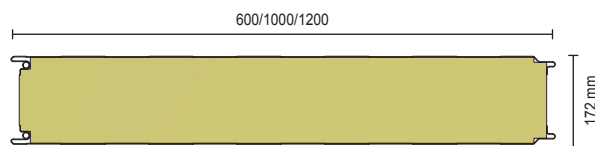
## MATERIALS:

|                     |   |
|---------------------|---|
| ■ Core material     | 172 mm mineral wool (non-combustible)   |
| ■ Fire exposed side | stainless steel 316 2B (optional 0.6 mm skin 25 micron PVDF standard RAL colour)  |
| ■ Non-fire side     | 0.7 mm coil coated galvanized steel sheet S280GD + ZA with HPS200 ultra coating<br>(optional stainless steel 316)<br>Thickness 200 micron - EN 13523-1<br>Corrosion resistance 1000 h salt spray test - EN 13523-8<br>Corrosion resistance 1000 h humidity - EN 13523-25<br>Corrosion resistance category RC5 - EN 10169:2010<br>UV resistance RUV4 - EN 10169:2010 |

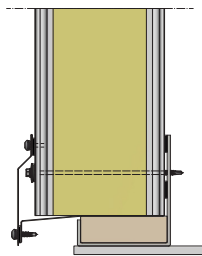
## OVERVIEW:



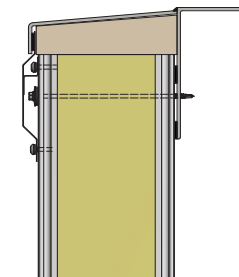
FRONT VIEW (3D)



HORIZONTAL SECTION



BOTTOM SECTION



TOP SECTION

# G21 FIRE PANEL

WITH BLAST RELIEF OPTION

Version 18.1 - sheet 1.3.9

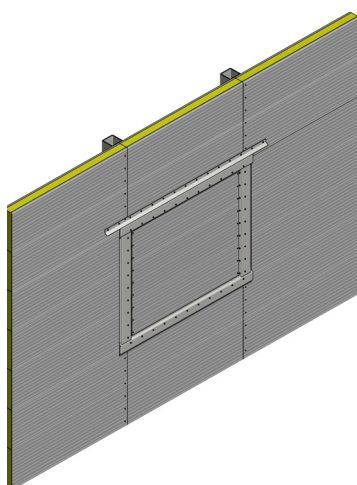
## PERFORMANCES:

Standard performances based on the G21 Fire Panel with a relieving opening function at 5 kPa/5 ms.  
(Higher values according project requirements upon request).

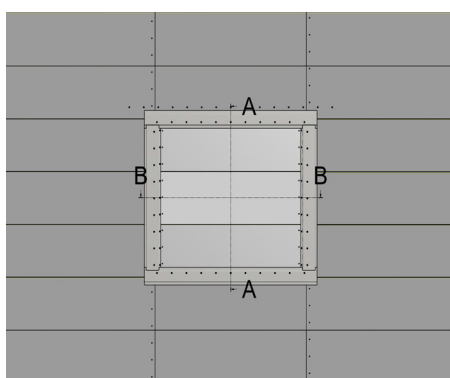
## MATERIALS:

Standard G21 Fire Panel with brackets made of stainless steel 316 material in addition.

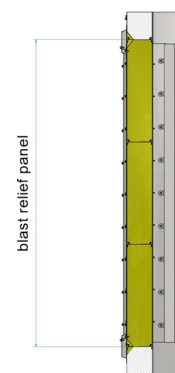
## OVERVIEW



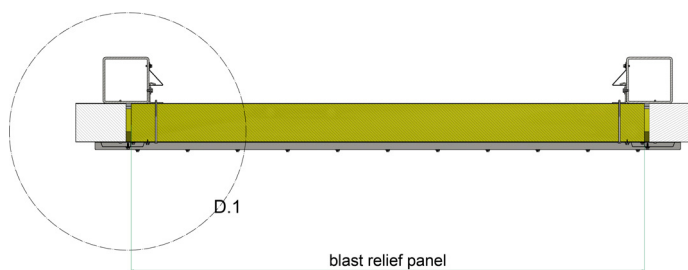
3D VIEW



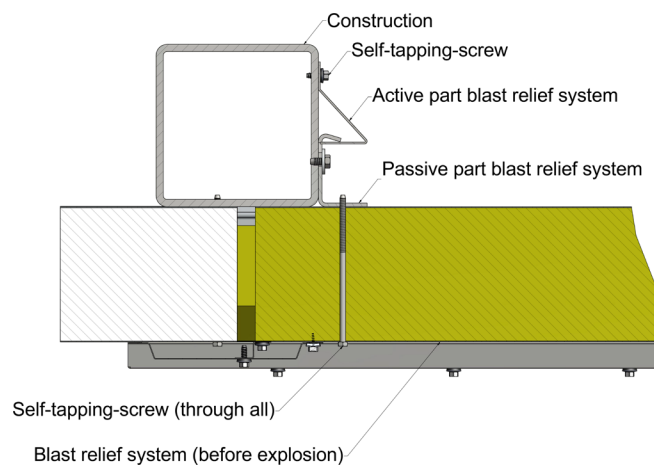
FRONT VIEW



A-A SECTION



SECTION B-B



DETAIL D.1



# EXTERNAL SANDWICH WALLS

G21 BLAST PANEL - A60 - GALVANIZED STEEL

Version 18.1 - sheet 1.3.10

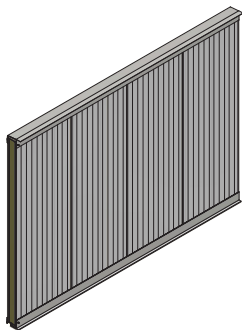
## PERFORMANCES:

- Blast resistance Up to 1.0 bar
- Fire resistance A0/A60 in accordance with IMO Resolution MSC.307(88)  
Fire-post-blast certified®
- Sound insulation 32 dB in accordance with EN ISO 140-3
- Thermal insulation  $U = 0.26 \text{ W/m}^2\text{K}$
- Durability Design life of 30 years with minimum maintenance
- Weight  $30 \text{ kg / m}^2$  at 150 mm panel thickness
- Air tightness  $0.1 \text{ m}^3/\text{m}^2/\text{h}$  at 50 Pa, according to EN 12114:2001
- Water tightness Class C according to EN 14509:2007  
No water penetration at test pressure 2100 Pa, test method A, EN 12865:2002

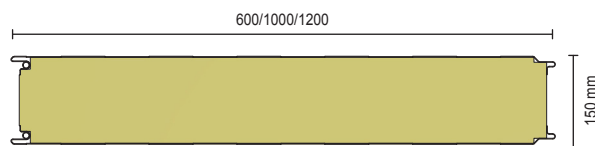
## MATERIALS:

- Core material 150 mm Power B mineral wool core (non-combustible)
- Panel skins 0.7 mm coil coated galvanized steel sheets S280GD + ZA with HPS200 ultra coating  
Thickness 200 micron - EN 13523-1  
Corrosion resistance 1000 h salt spray test - EN 13523-8  
Corrosion resistance 1000 h humidity - EN 13523-25  
Corrosion resistance category RC5 - EN 10169:2010  
UV resistance RUV4 - EN 10169:2010

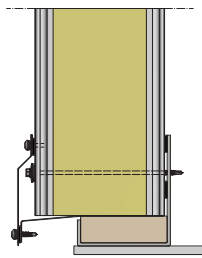
## OVERVIEW:



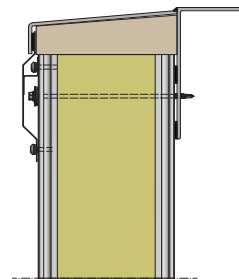
FRONT VIEW (3D)



HORIZONTAL SECTION



BOTTOM SECTION



TOP SECTION

# EXTERNAL SANDWICH WALLS

G21 BLAST PANEL - H120 - GALVANIZED STEEL

Version 18.1 - sheet 1.3.11

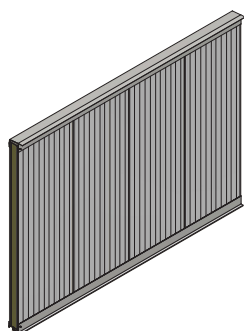
## PERFORMANCES:

- Blast resistance Up to 1.0 bar
- Fire resistance H0/H60/H120 in accordance with IMO Resolution MSC.307(88)  
Fire-post-blast® certified
- Sound insulation 32 dB in accordance with EN ISO 140-3
- Thermal insulation  $U = 0.23 \text{ W/m}^2\text{K}$
- Durability Design life of 30 years with minimum maintenance
- Weight  $33 \text{ kg / m}^2$  at 172 mm panel thickness
- Air tightness  $0.1 \text{ m}^3/\text{m}^2/\text{h}$  at 50 Pa, according to EN 12114:2001
- Water tightness Class C according to EN 14509:2007  
No water penetration at test pressure 2100 Pa, test method A, EN 12865:2002

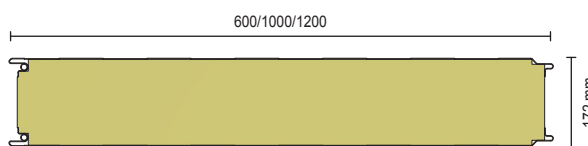
## MATERIALS:

- Core material 172 mm Power B mineral wool core (non-combustible)
- Panel skins 0.7 mm coil coated galvanized steel sheets S280GD + ZA with HPS200 ultra coating  
Thickness 200 micron - EN 13523-1  
Corrosion resistance 1000 h salt spray test - EN 13523-8  
Corrosion resistance 1000 h humidity - EN 13523-25  
Corrosion resistance category RC5 - EN 10169:2010  
UV resistance RUV4 - EN 10169:2010

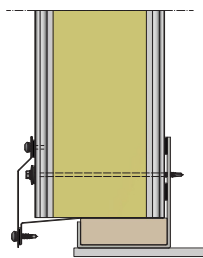
## OVERVIEW:



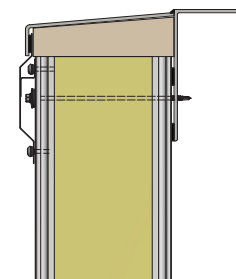
FRONT VIEW (3D)



HORIZONTAL SECTION



BOTTOM SECTION



TOP SECTION

# PREFABRICATED EXTERNAL WALLS

IDM PROPANEL - A60

Version 18.1 - sheet 1.4.1

## PERFORMANCES:

- Fire resistance A0/A60 in accordance with IMO Resolution MSC.307(88)
- Tightness Resolution A.754(18) suitable for offshore environment - gastight and weathertight
- Sound insulation Min 35 dBa over total construction
- Thermal insulation  $U = 0.4 \text{ W/m}^2\text{K}$
- Durability Lifetime expectancy of 30 years with normal maintenance
- Weight 32 kg / m<sup>2</sup>

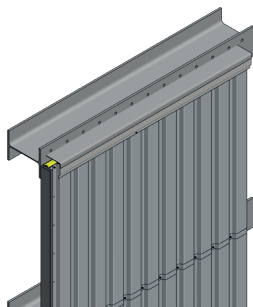
## MATERIALS:

- 60 mm Skamol core with 0.75 mm coil-coated galvanized steel sheet at both sides
- 50 mm insulation package
- External corrugated sheeting - galvanized steel sheet thickness 0.75 mm provided with a plastisol coil-coating in RAL colour or alternatively 0.8 mm stainless steel 316

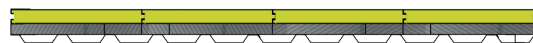
## OPTIONS:

Apart from these standard systems, regularly modified types are designed to suit specific project requirements that cannot be met with standard systems, such as blast resistance.

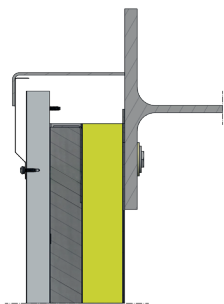
## OVERVIEW:



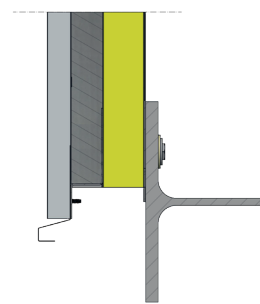
FRONT VIEW



TOP VIEW



TOP DETAIL



BOTTOM DETAIL

# PREFABRICATED EXTERNAL WALLS

IDM PROPANEL - H60/H120

Version 18.1 - sheet 1.4.2

## PERFORMANCES:

- Fire resistance H0/H60/H120 in accordance with IMO Resolution MSC.307(88)
- Tightness Resolution A.754(18) suitable for offshore environment - gastight and weathertight
- Sound insulation Min 35 dBa over total construction
- Thermal insulation  $U = 0.4 \text{ W/m}^2\text{K}$
- Durability Lifetime expectancy of 30 years with normal maintenance
- Weight ProPanel with mild steel external skin -  $44.4 \text{ kg/m}^2$   
ProPanel with SS316L external skin -  $45.8 \text{ kg/m}^2$

## MATERIALS:

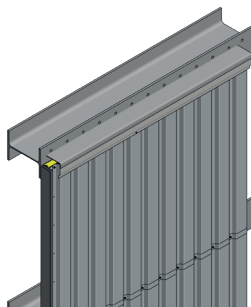
- 60 mm Skamol core with 0.75 mm coil-coated galvanized steel sheet at both sides
- 50 mm insulation package for H60, 2 x 50 mm insulation package for H120
- External corrugated sheeting - galvanized steel sheet thickness 0.75 mm provided with a plastisol coil-coating in RAL colour or alternatively 0.8 mm stainless steel 316

## OPTIONS:

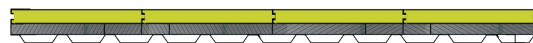
Apart from these standard systems, regularly modified types are designed to suit specific project requirements that cannot be met with standard systems, such as:

- blast resistance (in case of blast resistance, weight will deviate)
- jet-fire resistance

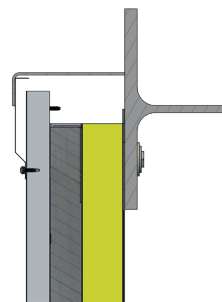
## OVERVIEW:



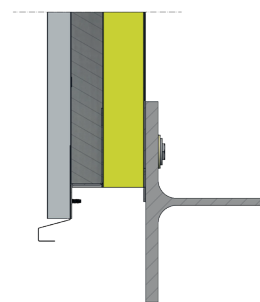
FRONT VIEW



TOP VIEW



TOP DETAIL



BOTTOM DETAIL

# PREFABRICATED EXTERNAL WALLS

IDM PROPANEL - WELDED

Version 18.1 - sheet 1.4.3

## PERFORMANCES:

- Fire resistance A0/A60/H0/H60/H120 in accordance with IMO Resolution MSC.307(88)
- Tightness Resolution A.754(18) suitable for offshore environment - gastight and weathertight
- Sound insulation 35 - 55 dBA over total construction
- Thermal insulation  $U = 0.4 \text{ W/m}^2\text{K}$  max
- Durability Lifetime expectancy of min. 30 years with normal maintenance

## MATERIALS:

The wall is supplied in panel sections of approx. 2000mm wide, which will be tack welded into position. Fully seam welding to steel construction for 100% air-, gas- and watertightness. The external corrugated profile will be supplied including borders. Fire rating properties achieved by application of heavy duty insulation cores.

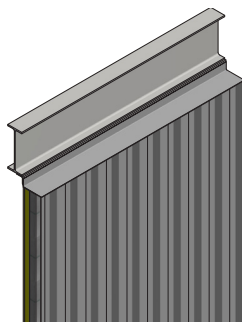
Material carbon steel (blasted, primed and provided with a tie-coat) or stainless steel 316L.

## OPTIONS:

Apart from these standard systems, regularly modified types are designed to suit specific project requirements that cannot be met with standard systems, such as:

- blast resistance
- jet-fire resistance

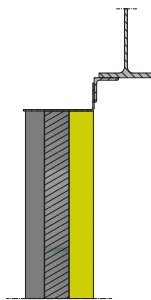
## OVERVIEW:



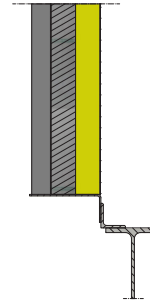
FRONT VIEW



TOP VIEW



TOP DETAIL



BOTTOM DETAIL

# PREFABRICATED EXTERNAL WALLS

IDM BLAST / FIRE WALL

Version 18.1 - sheet 1.4.4

## PERFORMANCES:

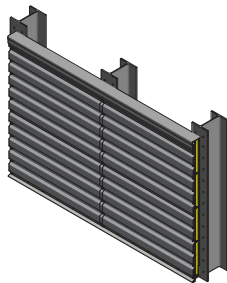
- Blast resistance Up to 2.5 bar (higher pressures upon request)
- Fire resistance A0/A60/H0/H60/H120 in accordance with IMO Resolution MSC.307(88)  
Note: fire resistance tested after blast exposure
- Tightness Resolution A.754(18) suitable for offshore environment - gastight and weathertight
- Sound insulation 35 - 55 dBA over total
- Thermal insulation Construction  $U = 0.4 \text{ W/m}^2\text{K}$  max.
- Durability Lifetime expectancy of min. 30 years with normal maintenance
- Weight A60 wall with blast resistance from  $48 \text{ kg/m}^2$  (depending on blast load, excl. steel columns)  
H60/H120 wall with blast resistance from  $50 \text{ kg/m}^2$  (depending on blast load, excl. steel columns)
- Additional options Apart from these standard systems regularly modified types are designed to suit specific project requirements that cannot be met with standard system, such as:
  - impact resistance
  - jet-fire resistance

## MATERIALS:

System build-up:

- 60 mm heavy duty core with min. 0.75 mm coil-coated galvanized steel sheet at both-sides
- 50 mm insulation package for H60, 2 x 50 mm insulation package for H120
- External profiled metal skin - galvanized steel sheet thickness min. 0.75 mm provided with a Plastisol coil-coating in RAL colour or alternatively min. 0.8 mm stainless steel 316L

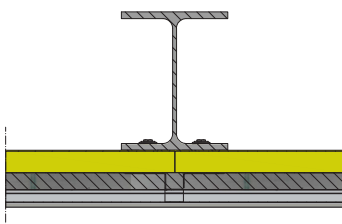
## OVERVIEW:



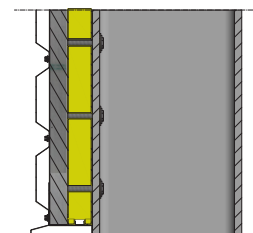
FRONT VIEW



VERTICAL SECTION



HORIZONTAL DETAIL



BOTTOM DETAIL

# LOUVRES

## LOOSE LOUVRES

Version 18.1 - sheet 1.4.5

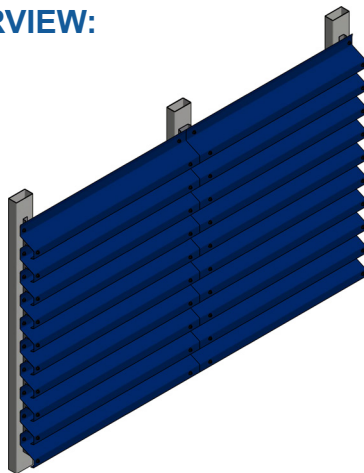
Louvres will be a prefabricated system consisting of louvre blades complete with suitable supports. The louvre design is optimised by giving due consideration to the pressure drop and air flow. The louvre blades are of a profiled type and fixed by bolting the louvre blades to the vertical aluminium or stainless steel brackets. Materials for louvre blades in pre-coated galvanised steel or stainless steel.

### LOOSE LOUVRES

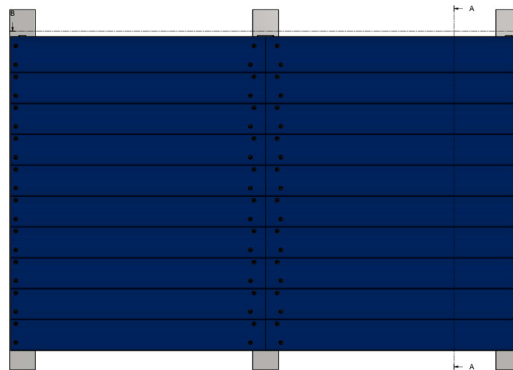
Louvre blades supplied loose – material 0.8 mm stainless steel 316L. To cover height of 500 mm you will require 4 no. louvre blades on top of each other. Fixing of louvre blades in stainless steel bracket which is fixed to provided steel supports (by yard).

Louvre blades supplied loose – material 0.75 mm galvanised steel HPS Plastisol coated in colour standard RAL colour on both sides. To cover height of 500 mm you will require 4 no. louvre blades on top of each other. Fixing of louvre blades in aluminium or stainless steel bracket which is fixed to provided steel supports (by yard).

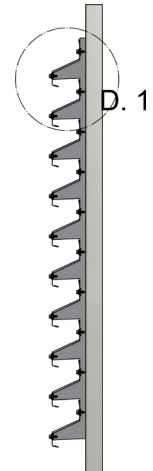
### OVERVIEW:



3D VIEW



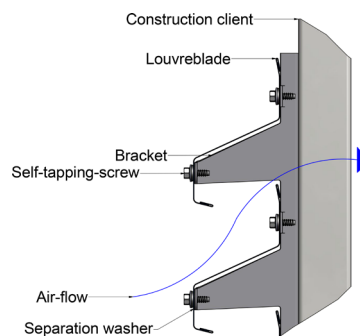
FRONT VIEW



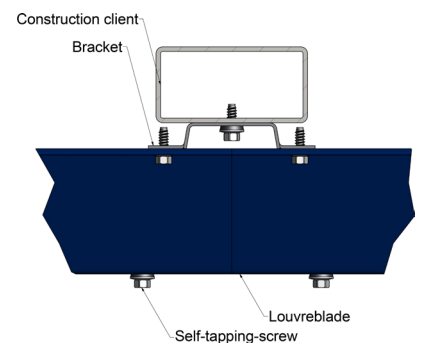
SECTION A-A



SECTION B-B



DETAIL 1



DETAIL 2

# LOUVRES

## FRAMED LOUVRES

Version 18.1 - sheet 1.4.6

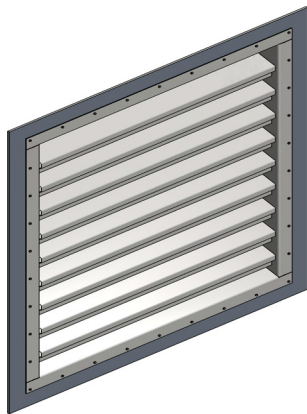
Louvres will be a prefabricated system consisting of louvre blades complete with suitable supports. The louvre design is optimised by giving due consideration to the pressure drop and air flow. The louvre blades are of a profiled type and fixed by bolting the louvre blades to the vertical aluminium or stainless steel brackets. Materials for louvre blades in pre-coated galvanised steel or stainless steel.

### FRAMED LOUVRES

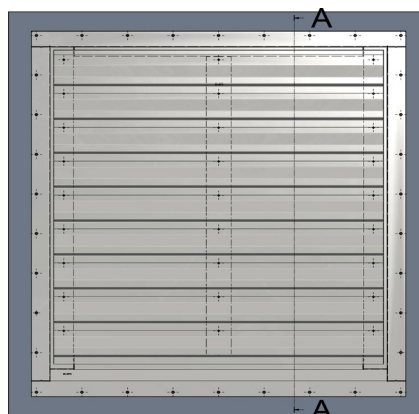
Framing for louvres complete with louvre blades installed. Material for framing 2.0 mm stainless steel framing (no further surface treatment). Material for louvre blades 0.8 mm stainless steel 316L

Framing for louvres complete with louvre blades installed. Material for framing 2.0 mm stainless steel framing (no further surface treatment). Material for louvre blades 0.75 mm galvanised steel HPS Plastisol coated in standard RAL colour – internal side primer provided with offshore powder coating system in colour RAL9002.

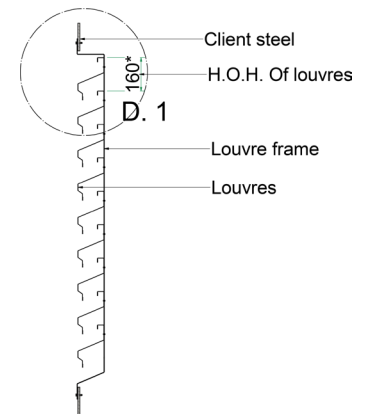
### OVERVIEW:



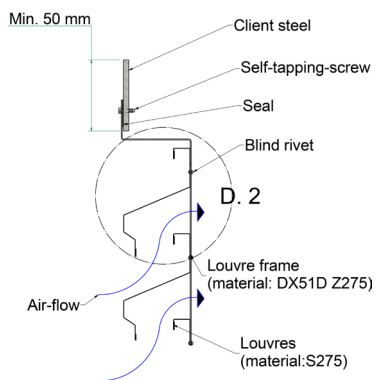
3D VIEW



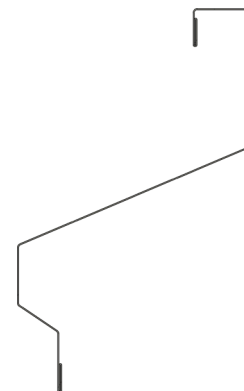
FRONT VIEW



SECTION A-A

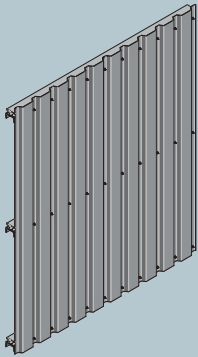


DETAIL 1



DETAIL 2



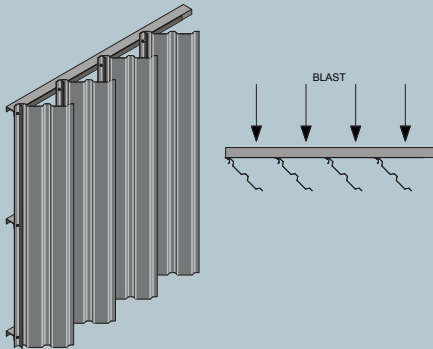


### WINDSHIELD CLADDING

Windshield cladding single skin corrugated sheeting with profile height of 35 mm. Fixed to supporting rails with stainless steel selftapping bolts. Special gaskets will be used to separate dissimilar materials where required to avoid galvanic corrosion. Maximum unsupported span of cladding will be approx. 1800 mm.

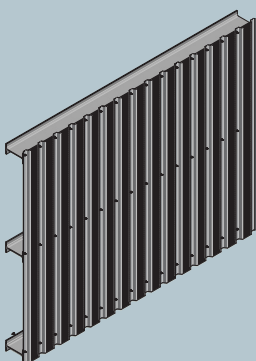
#### Material

- Galvanized steel provided with Plastisol coilcoating
- Stainless steel 316L (optional: perforated)
- Aluminium



### BLAST RELIEF CLADDING

Base principle windshield cladding single skin corrugated sheeting with profile height of 35 mm. Fixing of cladding by special in-house designed relief bolts. Blast relief cladding system provides venting from an internal explosion. Cladding panels open up and give minimum 75% clear opening within a time period of 4 msec after reaching a maximum overpressure of 0.05 bar. If required additional holding devices can be provided to retain the panels during opening.



### HEATSHIELD CLADDING

The Heatshield cladding panels are based on a single skin type, when required supplied complete with a framing. Heatshieldpanels will be bolted to a back-up framing. Materials for Heatshield will be stainless steel 316L. Heatshield panels will as a minimum meet the following criteria:

- up to 75% reduction in radiation from the external to the internal face of the panels
- visibility through the panels
- natural ventilation through the panels

# INTERNAL SANDWICH WALLS

G21 FIRE PANEL - A60

Version 18.1 - sheet 1.5.1

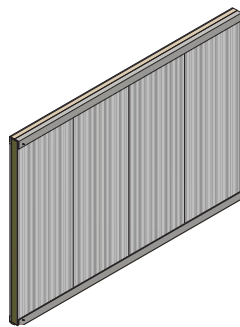
## PERFORMANCES:

|                      |   |
|----------------------|---|
| ■ Fire resistance    | A0/A60 in accordance with IMO Resolution MSC.307(88)  |
| ■ Sound insulation   | 32 dB in accordance with EN ISO 140-3   |
| ■ Thermal insulation | $U = 0.4 \text{ W/m}^2\text{K}$   |
| ■ Durability         | Design life of 30 years with minimum maintenance  |
| ■ Weight             | 24 kg / m <sup>2</sup> at 100 mm panel thickness  |
| ■ Core Density       | 120 kg/m <sup>3</sup> - EN 1602:1997  |
| ■ Air tightness      | 0.1 m <sup>3</sup> /m <sup>2</sup> h at 50 Pa, according to EN 12114:2001   |
| ■ Water tightness    | Class C according to EN 14509:2007<br>No water penetration at test pressure 2100 Pa, test method A, EN 12865:2002 |

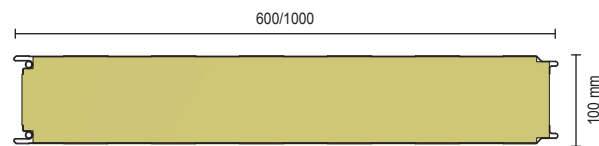
## MATERIALS:

|                 |  |
|-----------------|--|
| ■ Core material | 100 mm mineral wool (non-combustible)  |
| ■ Panel skins   | 0.7 mm coil coated galvanized steel sheets S280GD + ZA with HPS200 ultra coating<br>Thickness 200 micron - EN 13523-1<br>Corrosion resistance 1000 h salt spray test - EN 13523-8<br>Corrosion resistance 1000 h humidity - EN 13523-25<br>Corrosion resistance category RC5 - EN 10169:2010<br>UV resistance RUV4 - EN 10169:2010 |

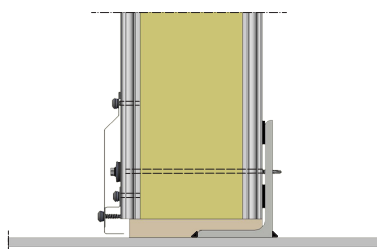
## OVERVIEW:



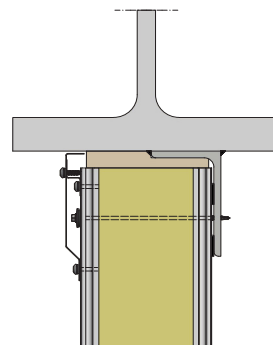
FRONT VIEW (3D)



HORIZONTAL SECTION



BOTTOM SECTION



TOP SECTION

# INTERNAL SANDWICH WALLS

G21 FIRE PANEL - H120

Version 18.1 - sheet 1.5.2

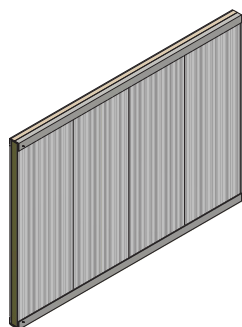
## PERFORMANCES:

|                      |   |
|----------------------|---|
| ■ Fire resistance    | H0/H60/H120 in accordance with IMO Resolution MSC.307(88)   |
| ■ Sound insulation   | 32 dB in accordance with EN ISO 140-3   |
| ■ Thermal insulation | $U = 0.23 \text{ W/m}^2\text{K}$  |
| ■ Durability         | Design life of 30 years with minimum maintenance  |
| ■ Weight             | 33 kg / m <sup>2</sup> at 172 mm panel thickness  |
| ■ Core Density       | 120 kg/m <sup>3</sup> - EN 1602:1997  |
| ■ Air tightness      | 0.1 m <sup>3</sup> /m <sup>2</sup> h at 50 Pa, according to EN 12114:2001   |
| ■ Water tightness    | Class C according to EN 14509:2007<br>No water penetration at test pressure 2100 Pa, test method A, EN 12865:2002 |

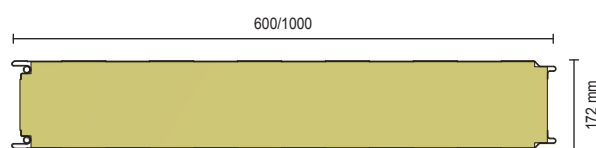
## MATERIALS:

|                 |  |
|-----------------|--|
| ■ Core material | 172 mm mineral wool (non-combustible)  |
| ■ Panel skins   | 0.7 mm coil coated galvanized steel sheets S280GD + ZA with HPS200 ultra coating<br>Thickness 200 micron - EN 13523-1<br>Corrosion resistance 1000 h salt spray test - EN 13523-8<br>Corrosion resistance 1000 h humidity - EN 13523-25<br>Corrosion resistance category RC5 - EN 10169:2010<br>UV resistance RUV4 - EN 10169:2010 |

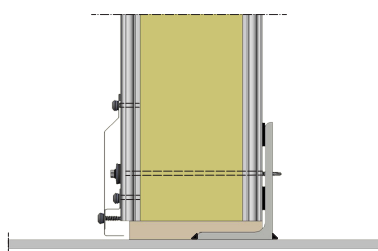
## OVERVIEW:



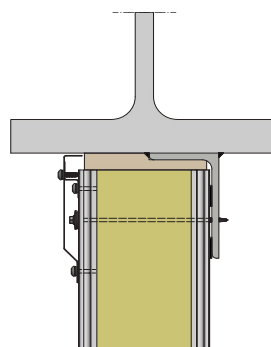
FRONT VIEW (3D)



HORIZONTAL SECTION



BOTTOM SECTION



TOP SECTION

# INTERNAL SANDWICH WALLS

G21 FIRE PANEL - B15

Version 18.1 - sheet 1.5.3

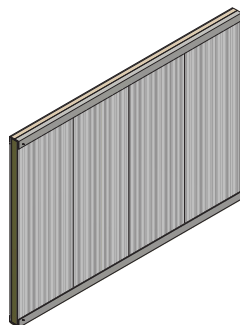
## PERFORMANCES:

|                      |   |
|----------------------|---|
| ■ Fire resistance    | B15 in accordance with IMO Resolution MSC.307(88)   |
| ■ Sound insulation   | 30 dB in accordance with EN ISO 140-3   |
| ■ Thermal insulation | $U = 0.61 \text{ W/m}^2\text{K}$  |
| ■ Durability         | Design life of 30 years with minimum maintenance  |
| ■ Weight             | 18 kg / m <sup>2</sup> at 172 mm panel thickness  |
| ■ Core Density       | 120 kg/m <sup>3</sup> - EN 1602:1997  |
| ■ Air tightness      | 0.1 m <sup>3</sup> /m <sup>2</sup> h at 50 Pa, according to EN 12114:2001   |
| ■ Water tightness    | Class C according to EN 14509:2007<br>No water penetration at test pressure 2100 Pa, test method A, EN 12865:2002 |

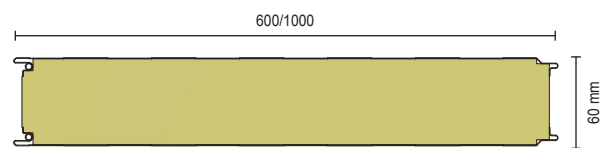
## MATERIALS:

|                 |  |
|-----------------|--|
| ■ Core material | 60 mm mineral wool (non-combustible)   |
| ■ Panel skins   | 0.7 mm coil coated galvanized steel sheets S280GD + ZA with HPS200 ultra coating<br>Thickness 200 micron - EN 13523-1<br>Corrosion resistance 1000 h salt spray test - EN 13523-8<br>Corrosion resistance 1000 h humidity - EN 13523-25<br>Corrosion resistance category RC5 - EN 10169:2010<br>UV resistance RUV4 - EN 10169:2010 |

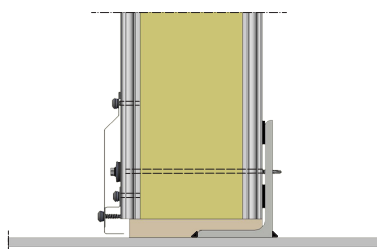
## OVERVIEW:



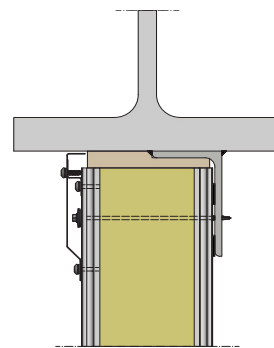
FRONT VIEW (3D)



HORIZONTAL SECTION



BOTTOM SECTION



TOP SECTION

# INTERNAL SANDWICH WALLS

## SUSPENDED CEILING

Version 18.1 - sheet 1.5.4

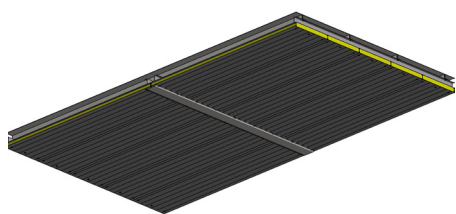
### PERFORMANCES:

Standard performances based on the G21 Fire Panel. The panel to be installed below the deck plate by a rail system creating the A60 fire resistant suspended ceiling application.

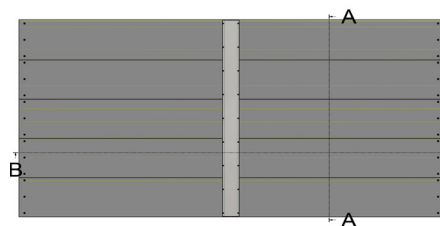
### MATERIALS:

Standard G21 Fire Panel with supporting Z-profiles in galvanized steel material.

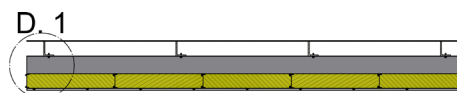
### OVERVIEW:



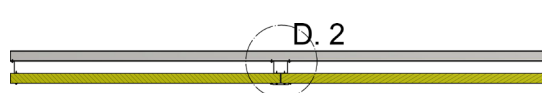
3D VIEW



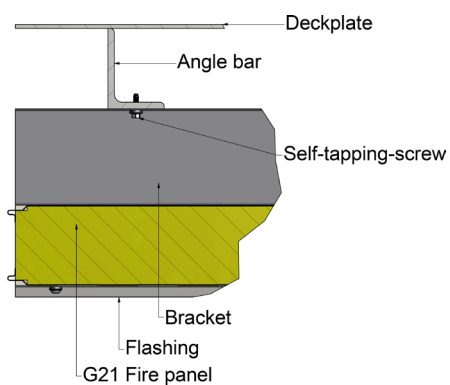
FRONT VIEW



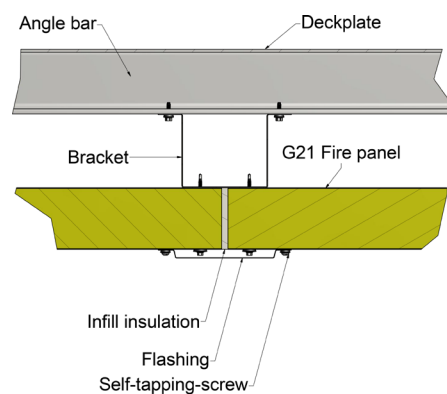
SECTION A-A



SECTION B-B



DETAIL 1



DETAIL 2

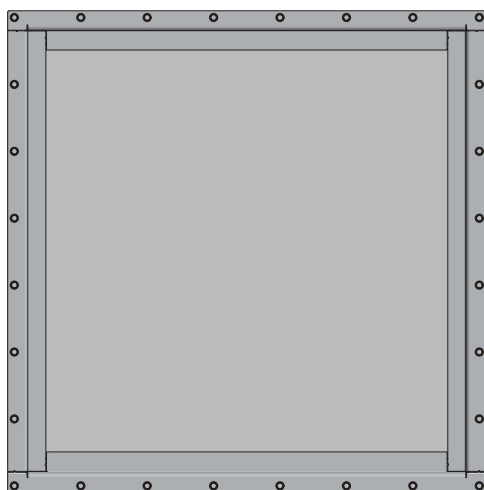
## PERFORMANCES:

- Fire resistance A0/A60/H0/H60/H120 in accordance with IMO Resolution MSC.307(88)  
In addition, the A60 type is Fire-post-blast© certified
- Explosion resistance Up to 1.0 bar
- Tightness Air leakage rate 0,21-0,5 m<sup>3</sup>/m<sup>2</sup>/h @50 Pa
- Sound reduction Standard sound insulation value of 48 dB in accordance with ISO 140-3
- Light Transmittance Standard 90%
- Thermal transmittance U = 1.1 - 1.5 W/m<sup>2</sup>K
- Adaptivity Adjustable to wall thickness by telescopic internal frame

## MATERIALS:

- Laminated glass elements
- External frames from steel (Z-frame coated)
- Internal frames from extruded aluminium (coated)
- More options are:
  - Stainless steel for outer frame
  - Tinted glass
  - Self-cleaning coating / sun reduction coating
  - Roller blinds

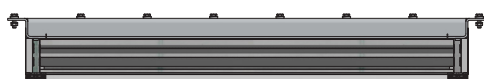
## OVERVIEW:



FRONT VIEW



VERTICAL VIEW



HORIZONTAL VIEW

# PREFABRICATED MODULE

IG21 mini mobile blast and fire resistant module

Version 18.1 - sheet 1.7.1

## PERFORMANCES:

- |                      |  |
|----------------------|--|
| ■ Fire resistance    | A0/A60/H0/H60/H120 in accordance with IMO Resolution MSC.307(88)                   |
| ■ Blast resistance   | 0.5 bar blast overpressure   |
| ■ Tightness          | Resolution A.754(18) suitable for offshore environment - gastight and weathertight |
| ■ Sound insulation   | 35 - 55 dBA over total construction  |
| ■ Thermal insulation | $U = 0.4 \text{ W/m}^2\text{K}$ max  |
| ■ Durability         | Lifetime expectancy of min. 30 years with normal maintenance                       |

## DETAILS:

Standard module including single hinged blast/fire rated door and escape hatch.

## OPTIONS:

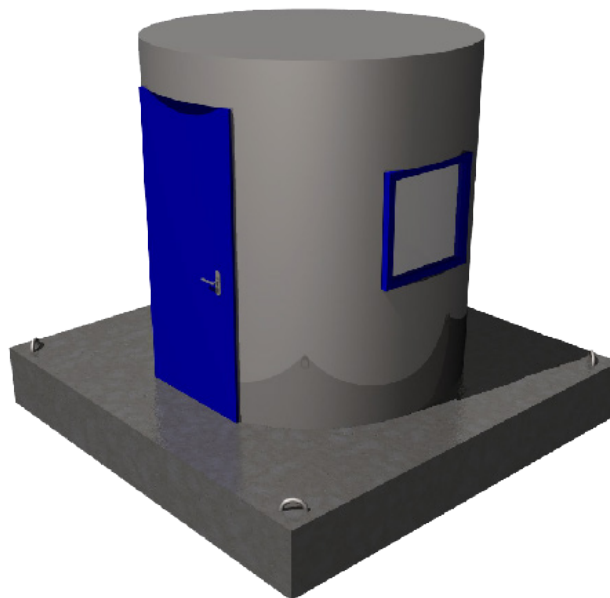
Apart from these standard systems regularly modified types are designed to suit specific project requirements that cannot be met with standard systems, such as:

- blast resistance - higher blast loads up to 1.6 bar blast overpressure
- jet-fire resistance - to ISO 22899 - 1

## MATERIALS:

The module is supplied on a standard concrete grid based on 20ft container size L 5.88 m x W 2.34 m provided with lifting lugs. Fire rating properties achieved by application of heavy duty insulation cores. Material carbon steel (blasted, primed, and provided with a tie-coat) or stainless steel 316L.

## OVERVIEW:





InterDam B.V.  
Benedenrijweg 186  
2987 VB Ridderkerk  
The Netherlands  
T. +31 (0)180 470030  
F. +31 (0)180 470039

P.O. Box 299  
2980 AG Ridderkerk  
The Netherlands  
[www.interdam.com](http://www.interdam.com)  
[info@interdam.com](mailto:info@interdam.com)

InterDam Americas Inc.  
19998 Hickory Twig Way  
Spring, TX 77388  
United States of America  
T. +1 281 882 8302  
E. [americas@interdam.com](mailto:americas@interdam.com)

